



Daniel Smith Industries Ltd
 315 Flaxton Road, Rangiora, 7400
 Canterbury, New Zealand.
 Phone: 0064 (0) 3 313 9902
 Fax: 0064 (0) 3 313 9904
 Mobile 0064 (0) 21 33 66 23
 Email: daniel@danielsmith.co.nz

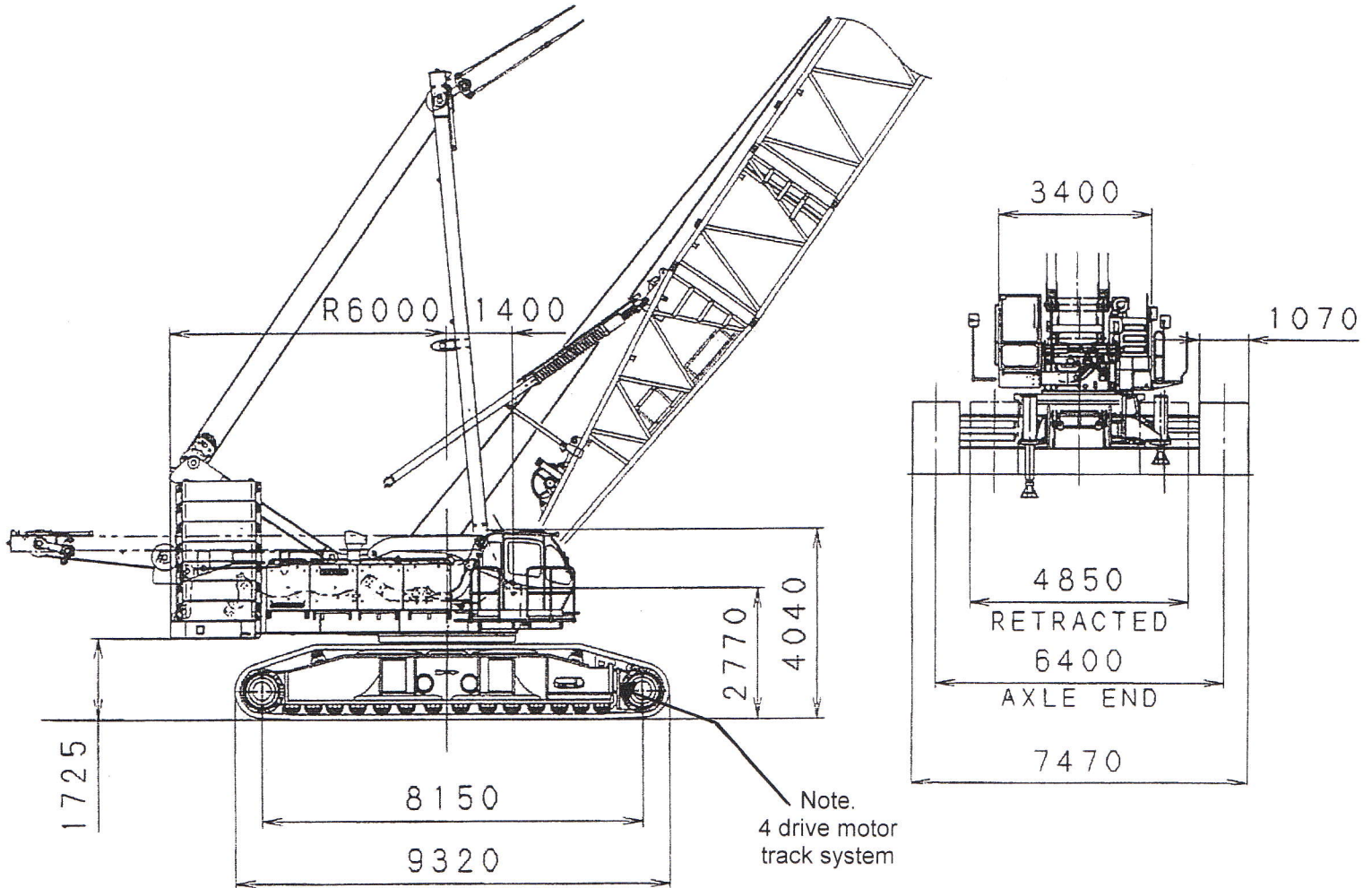
KOBELCO

CKE 2500-W-HD
300 ton Wind Special
Retractable Track Crawler Crane

Unit: mm

Page 1 of 27

General Dimensions (with basic boom)



Specifications

Main Boom	
Max. Lifting Capacity	300 ton at 3.5m
Max. Length	91.4m
Fixed Jib Heavy Duty Wind Turbine Special	
Max. Lifting Capacity	42 ton at 14m
Max. Combination	61 ton at 36.6m fixed special jib at 10°
Luffing Jib	
Max. Lifting Capacity	80 ton at 9.8m
Max. Combination	61 ton at 61m
Luffing Angle	63° - 88°
Main & Aux Winch	
Max. Line Speed	110m/min (1 st layer)
Rated Line Pull	132 kN (13.5 tf)
Max. Line Pull	245 kN (25 tf)
Wire Rope	25 mm
Wire Rope Length	480m (Main) 385m (Aux.)
Brake Type	Wet-type multiple disc brake
Free-Fall	Option

Working Speed	
Swing Speed	2.1 min ⁻¹ (rpm)
Travel Speed	.55 Km/h
Power Plant	
Model	Hino PIIC
Engine Output	247 kW/2,000 min ⁻¹ (rpm)
Fuel Tank Capacity	400 Litres
Hydraulic System	
Main Pump	4 variable displacement
Max. Pressures	30.9 MPa (315 kgf/cm ²)
Hydraulic Tank Capacity	550 Litres
Self Erecting Device	Standard
Weight	
Operating Weight	300 ton
Counterweight	90 ton (Upper) / 24 ton (Lower)
Transport Weight	44.9t (Main machine)
Ground Pressure	95 kPa (0.97 kgf/cm ²)



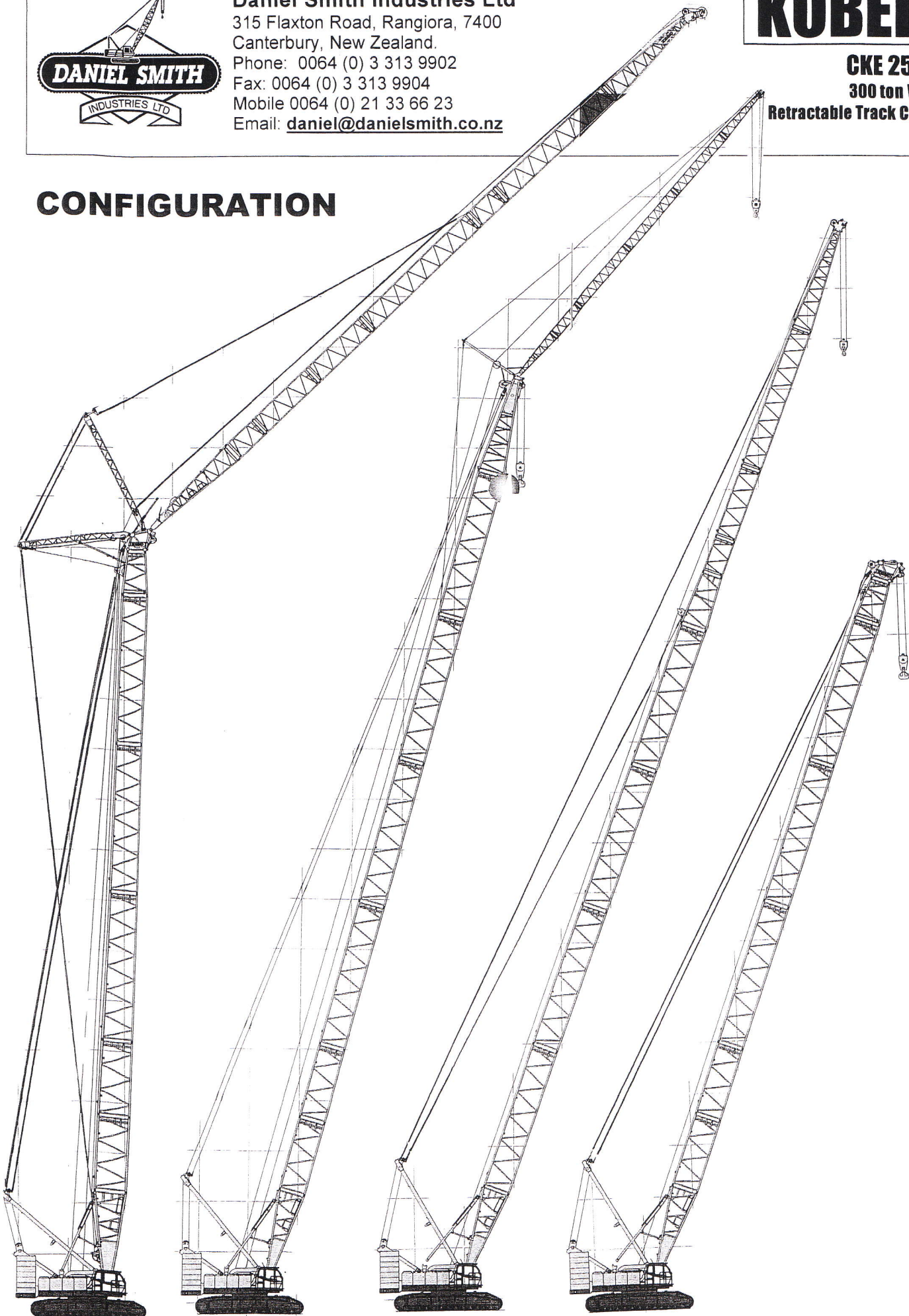
Daniel Smith Industries Ltd
315 Flaxton Road, Rangiora, 7400
Canterbury, New Zealand.
Phone: 0064 (0) 3 313 9902
Fax: 0064 (0) 3 313 9904
Mobile 0064 (0) 21 33 66 23
Email: daniel@danielsmith.co.nz

KOBELCO

CKE 2500-W-HD
300 ton Wind Special
Retractable Track Crawler Crane

Page 2 of 27

CONFIGURATION



Luffing Boom &
Luffing Fly Jib

Fixed fly jib option
76.2m main boom
plus 30.5m fly jib

Long boom
option & up to
91m main boom

Standard Crane
& up to 61m
main boom

Wind Turbine attachment 61m
main boom plus fixed fly jib options
21.3 -36 metres



Daniel Smith Industries Ltd
 315 Flaxton Road, Rangiora, 7400
 Canterbury, New Zealand.
 Phone: 0064 (0) 3 313 9902
 Fax: 0064 (0) 3 313 9904
 Mobile 0064 (0) 21 33 66 23
 Email: daniel@danielsmith.co.nz

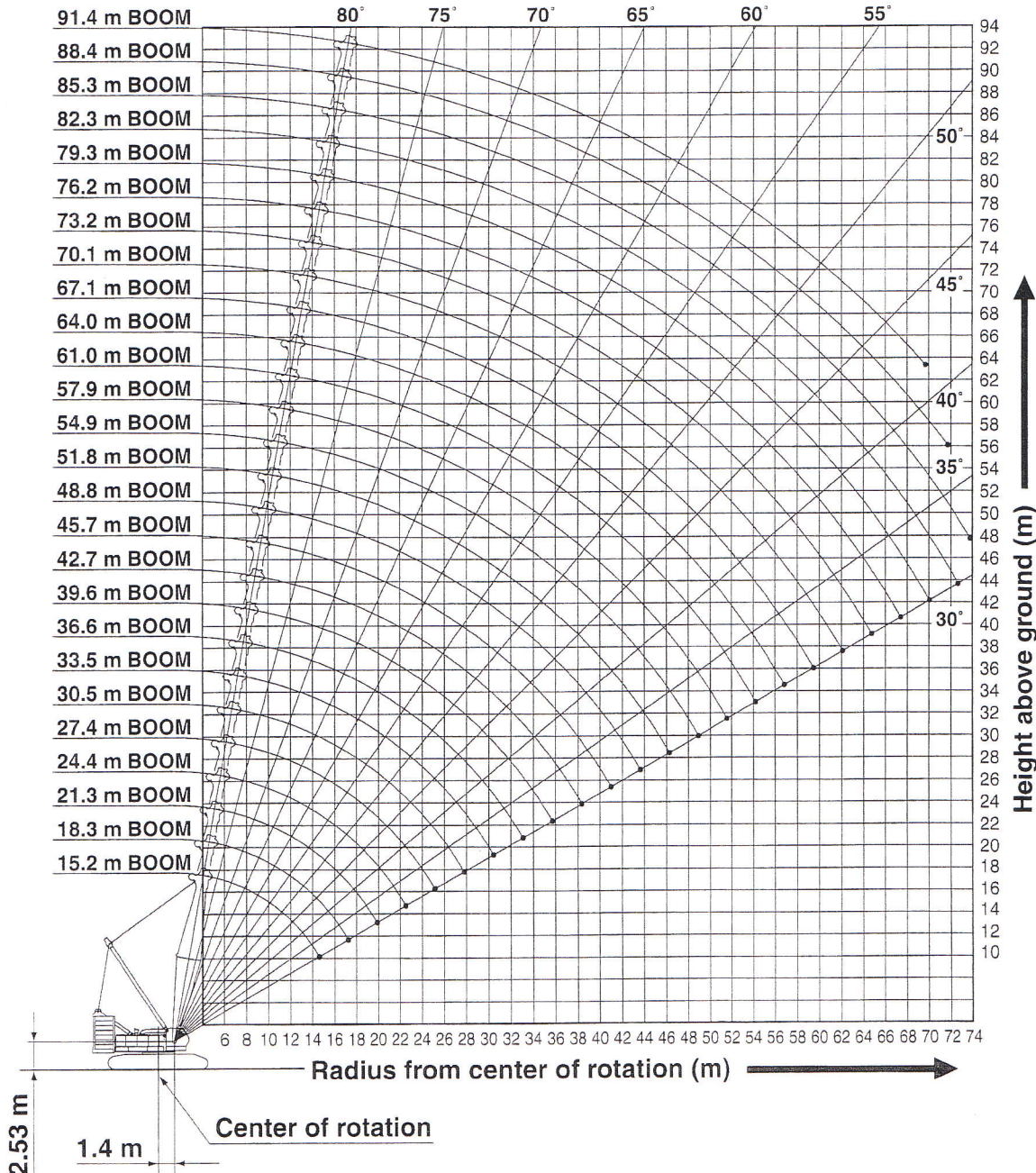
KOBELCO

CKE 2500-W-HD
300 ton Wind Special
Retractable Track Crawler Crane

Unit: metric ton

Page 3 of 27

Crane Boom Working Ranges



NOTES:

1. Ratings according to EN13000.
2. Ratings in metric tons for 360° working area.
3. Operating radius is the horizontal distance from center of rotation to a vertical line through the center of gravity of the load.
4. Weight of hook block(s), slings and other load handling accessories is included in rated load. Their total weight must be subtracted from rated load to obtain weight that can be lifted.
5. Ratings shown are based on freely suspended loads and make no allowance for such factors as wind effect on lifted load, ground conditions out-of-level, operating speeds or any other condition that could be detrimental to the safe operation of this equipment. Operator, therefore, has the responsibility to judge the existing conditions and reduce lifted loads and operating speeds accordingly.
6. Ratings are for operation on a firm and level surface, up to 1% gradient.
7. At radii and boom lengths where no ratings are shown on chart, operation is not intended nor approved.
8. Boom inserts and guy lines must be arranged as shown in the "Operator's Manual".
9. Boom hoist reeving is 16 part line.
10. Gantry must be in raised position for all conditions.
11. Boom backstops are required for all boom lengths.
12. The boom should be erected over the front of crawlers, not laterally.
13. Ratings shown in are determined by the strength of the boom or other structural component.
14. When erecting or lowering the boom length of 88.4 m or over, the pillow plate for erection must be placed at the end of crawlers.
15. Instruction in the "Operator's Manual" must be strictly observed when operating the machine.
16. Crane boom ratings: Deduct weight of hook block, slings, and all other load handling accessories from crane boom ratings shown.
17. Auxiliary sheave ratings for crane boom: Deduct weight of hook block, slings, and all other load handling accessories from auxiliary sheave ratings for crane boom shown.
18. Crane boom lengths for auxiliary sheave mounting are 15.2 m to 88.4 m.

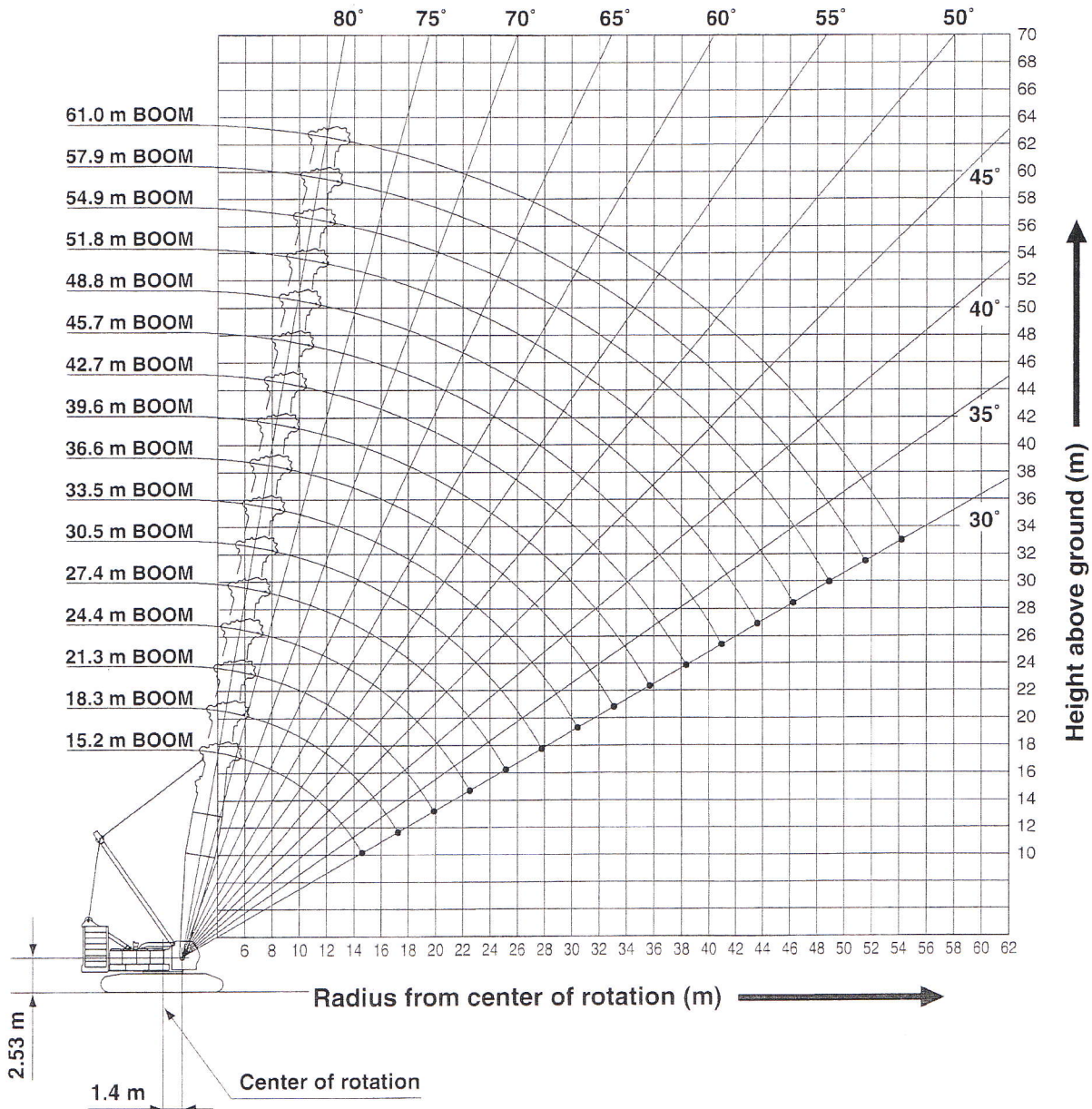


Daniel Smith Industries Ltd
 315 Flaxton Road, Rangiora, 7400
 Canterbury, New Zealand.
 Phone: 0064 (0) 3 313 9902
 Fax: 0064 (0) 3 313 9904
 Mobile 0064 (0) 21 33 66 23
 Email: daniel@danielsmith.co.nz

KOBELCO

CKE 2500-W-HD
300 ton Wind Special
Retractable Track Crawler Crane

Luffing Boom Working Ranges



NOTES:

1. Ratings according to EN13000.
2. Ratings in metric tons for 360° working area.
3. Operating radius is the horizontal distance from center of rotation to a vertical line through the center of gravity of the load.
4. Weight of hook block(s), slings and other load handling accessories is included in rated load. Their total weight must be subtracted from rated load to obtain weight that can be lifted.
5. Ratings shown are based on freely suspended loads and make no allowance for such factors as wind effect on lifted load, ground conditions out-of-level, operating speeds or any other condition that could be detrimental to the safe operation of this equipment. Operator, therefore, has the responsibility to judge the existing conditions and reduce lifted loads and operating speeds accordingly.
6. Ratings are for operation on a firm and level surface, up to 1% gradient.
7. At radii and boom lengths where no ratings are shown on chart, operation is not intended nor approved.
8. Boom inserts and guy lines must be arranged as shown in the "Operator's Manual".
9. Boom hoist reeving is 16 part line.
10. Gantry must be in raised position for all conditions.
11. Boom backstops are required for all boom lengths.
12. The boom should be erected over the front of crawlers, not laterally.
13. Ratings shown in are determined by the strength of the boom or other structural component.
14. Instruction in the "Operator's Manual" must be strictly observed when operating the machine.
15. Luffing boom ratings: Deduct weight of hook block, slings, and all other load handling accessories from luffing boom ratings shown.
16. Auxiliary sheave ratings for luffing boom: Deduct weight of hook block, slings, and all other load handling accessories from auxiliary sheave ratings for luffing boom shown.
17. Luffing boom lengths for auxiliary sheave mounting are 15.2 m to 61.0 m.



Daniel Smith Industries Ltd
 315 Flaxton Road, Rangiora, 7400
 Canterbury, New Zealand.
 Phone: 0064 (0) 3 313 9902
 Fax: 0064 (0) 3 313 9904
 Mobile 0064 (0) 21 33 66 23
 Email: daniel@danielsmith.co.nz

KOBELCO

CKE 2500-W-HD
300 ton Wind Special
Retractable Track Crawler Crane

Unit: metric ton

Page 7 of 27

Luffing Boom Lifting Capacity

Counterweight: 90.0t, Carbody weight: 24.0t

Working radius (m)	Boom length (m)												Working radius (m)
	15.2	18.3	21.3	24.4	27.4	30.5	33.5	36.6	39.6	42.7	45.7		
5.0	5.4 m/150.0	5.9 m/143.6											5.0
6.0	150.0	143.6	6.4 m/143.8										6.0
7.0	150.0	143.6	143.8	144.2	7.5 m/144.6								7.0
8.0	144.9	143.6	143.8	144.0	143.8	132.2	8.6 m/116.0						8.0
9.0	129.2	128.9	128.8	128.4	128.2	123.8	114.6	9.1 m/111.3	9.6 m/100.0				9.0
10.0	116.5	116.2	116.0	115.7	114.0	111.8	109.7	107.7	98.5	10.1 m/95.1	10.7 m/83.0		10.0
12.0	88.9	88.8	88.7	88.6	88.5	88.4	88.3	88.2	86.9	84.9	78.8		12.0
14.0	71.2	71.1	71.0	70.9	70.8	70.7	70.6	70.5	70.4	70.3	70.2		14.0
16.0	15.3 m/61.6	59.2	59.1	59.0	58.9	58.8	58.7	58.6	58.5	58.4	58.3		16.0
18.0		17.9 m/50.7	50.5	50.4	50.3	50.2	50.1	50.0	49.9	49.8	49.7		18.0
20.0			43.8	43.7	43.6	43.5	43.4	43.3	43.2	43.0	42.9		20.0
22.0			20.6 m/42.2	38.4	38.3	38.2	38.1	38.0	37.9	37.6	37.5		22.0
24.0				23.2 m/35.7	34.1	33.9	33.8	33.7	33.6	33.3	33.2		24.0
26.0					25.8 m/30.8	30.4	30.3	30.2	30.0	29.8	29.7		26.0
28.0						27.4	27.3	27.2	27.1	26.8	26.7		28.0
30.0						28.5 m/26.8	24.9	24.8	24.6	24.3	24.2		30.0
32.0							31.1 m/23.7	22.6	22.4	22.2	22.1		32.0
34.0								33.8 m/21.0	20.6	20.3	20.2		34.0
36.0									18.9	18.6	18.5		36.0
38.0									36.4 m/18.6	17.2	17.1		38.0
40.0										39.0 m/16.5	15.9		40.0
42.0											41.7 m/15.0		42.0
44.0													44.0
46.0													46.0
Reeves	12	12	12	12	12	10	10	10	8	8	7		Reeves

Working radius (m)	Boom length (m)						Working radius (m)
	48.8	51.8	54.9	57.9	61.0		
10.0	11.2 m/81.0	11.7 m/77.9					10.0
12.0	77.3	76.1	12.3 m/73.2	12.8 m/69.2	13.3 m/65.2		12.0
14.0	68.7	64.9	63.8	63.0	62.0		14.0
16.0	58.2	58.0	56.8	54.8	54.0		16.0
18.0	49.6	49.5	49.3	48.9	47.9		18.0
20.0	42.8	42.7	42.5	42.4	42.2		20.0
22.0	37.4	37.3	37.1	37.0	36.9		22.0
24.0	33.1	33.0	32.8	32.7	32.5		24.0
26.0	29.6	29.5	29.2	29.1	29.0		26.0
28.0	26.6	26.5	26.3	26.2	26.0		28.0
30.0	24.1	24.0	23.7	23.6	23.4		30.0
32.0	21.9	21.8	21.5	21.4	21.3		32.0
34.0	20.0	19.9	19.6	19.5	19.4		34.0
36.0	18.4	18.3	18.0	17.9	17.7		36.0
38.0	16.9	16.8	16.5	16.4	16.2		38.0
40.0	15.6	15.5	15.2	15.1	14.9		40.0
42.0	14.5	14.3	14.1	14.0	13.7		42.0
44.0	13.5	13.3	13.0	12.9	12.7		44.0
46.0	44.3 m/13.3	12.4	12.1	12.0	11.7		46.0
48.0		47.0 m/11.9	11.2	11.1	10.9		48.0
50.0			49.6 m/10.6	10.4	10.1		50.0
52.0				9.7	9.4		52.0
54.0				52.2 m/9.6	8.7		54.0
56.0					54.9 m/8.4		56.0
58.0							58.0
60.0							60.0
62.0							62.0
Reeves	6	6	6	6	5		Reeves

Note: Ratings according to EN13000.

Ratings shown in are determined by the strength of the boom or other structural components.

Refer to notes P15.



Daniel Smith Industries Ltd
 315 Flaxton Road, Rangiora, 7400
 Canterbury, New Zealand.
 Phone: 0064 (0) 3 313 9902
 Fax: 0064 (0) 3 313 9904
 Mobile 0064 (0) 21 33 66 23
 Email: daniel@danielsmith.co.nz

KOBELCO

CKE 2500-W-HD
300 ton Wind Special
Retractable Track Crawler Crane

Unit: metric ton

Page 8 of 27

Auxiliary Sheave Lifting Capacity for Luffing Boom (with 70 t Main Hook)

Counterweight: 90.0t, Carbody weight: 24.0t

Working radius (m)	Boom length (m)												Working radius (m)
	15.2	18.3	21.3	24.4	27.4	30.5	33.5	36.6	39.6	42.7	45.7		
6.0	6.2 m/13.5	6.7 m/13.5											6.0
7.0	13.5	13.5	7.2 m/13.5	7.8 m/13.5									7.0
8.0	13.5	13.5	13.5	13.5	8.3 m/13.5	8.8 m/13.5							8.0
9.0	13.5	13.5	13.5	13.5	13.5	13.5	9.4 m/13.5	9.9 m/13.5					9.0
10.0	13.5	13.5	13.5	13.5	13.5	13.5	13.5	13.5	10.4 m/13.5	10.9 m/13.5	11.5 m/13.5		10.0
12.0	13.5	13.5	13.5	13.5	13.5	13.5	13.5	13.5	13.5	13.5	13.5	13.5	12.0
14.0	13.5	13.5	13.5	13.5	13.5	13.5	13.5	13.5	13.5	13.5	13.5	13.5	14.0
16.0	13.5	13.5	13.5	13.5	13.5	13.5	13.5	13.5	13.5	13.5	13.5	13.5	16.0
18.0	16.6 m/13.5	19.2 m/13.5	13.5	13.5	13.5	13.5	13.5	13.5	13.5	13.5	13.5	13.5	18.0
20.0			13.5	13.5	13.5	13.5	13.5	13.5	13.5	13.5	13.5	13.5	20.0
22.0			21.9 m/13.5	13.5	13.5	13.5	13.5	13.5	13.5	13.5	13.5	13.5	22.0
24.0				13.5	13.5	13.5	13.5	13.5	13.5	13.5	13.5	13.5	24.0
26.0				24.5 m/13.5	13.5	13.5	13.5	13.5	13.5	13.5	13.5	13.5	26.0
28.0					27.1 m/13.5	13.5	13.5	13.5	13.5	13.5	13.5	13.5	28.0
30.0						29.8 m/13.5	13.5	13.5	13.5	13.5	13.5	13.5	30.0
32.0							32.4 m/13.5	13.5	13.5	13.5	13.5	13.5	32.0
34.0								13.5	13.5	13.5	13.5	13.5	34.0
36.0								35.1 m/13.5	13.5	13.5	13.5	13.5	36.0
38.0									37.7 m/13.5	13.5	13.5	13.5	38.0
40.0										13.5	13.5	13.5	40.0
42.0										40.3 m/13.5	13.5	13.5	42.0
44.0											43.0 m/12.9	13.5	44.0
Reeves	1	1	1	1	1	1	1	1	1	1	1	1	Reeves

Working radius (m)	Boom length (m)						Working radius (m)
	48.8	51.8	54.9	57.9	61.0		
12.0	13.5	12.5 m/13.5	13.1 m/13.5	13.6 m/13.5		12.0	
14.0	13.5	13.5	13.5	13.5	14.1 m/13.5	14.0	
16.0	13.5	13.5	13.5	13.5	13.5	16.0	
18.0	13.5	13.5	13.5	13.5	13.5	18.0	
20.0	13.5	13.5	13.5	13.5	13.5	20.0	
22.0	13.5	13.5	13.5	13.5	13.5	22.0	
24.0	13.5	13.5	13.5	13.5	13.5	24.0	
26.0	13.5	13.5	13.5	13.5	13.5	26.0	
28.0	13.5	13.5	13.5	13.5	13.5	28.0	
30.0	13.5	13.5	13.5	13.5	13.5	30.0	
32.0	13.5	13.5	13.5	13.5	13.5	32.0	
34.0	13.5	13.5	13.5	13.5	13.5	34.0	
36.0	13.5	13.5	13.5	13.5	13.5	36.0	
38.0	13.5	13.5	13.5	13.5	13.5	38.0	
40.0	13.5	13.5	13.5	13.5	13.5	40.0	
42.0	13.3	13.1	12.9	12.8	12.5	42.0	
44.0	12.3	12.1	11.8	11.7	11.5	44.0	
46.0	45.6 m/11.5	11.2	10.9	10.8	10.5	46.0	
48.0		10.3	10.0	9.9	9.7	48.0	
50.0		48.3 m/10.2	9.1	9.2	8.9	50.0	
52.0			50.9 m/8.7	8.5	8.2	52.0	
54.0				53.5 m/8.0	7.5	54.0	
56.0					6.8	56.0	
58.0					56.2 m/6.7	58.0	
60.0						60.0	
62.0						62.0	
Reeves	1	1	1	1	1	Reeves	

Note: Ratings according to EN13000.

Ratings shown in are determined by the strength of the boom or other structural components.

Refer to notes P15.



Daniel Smith Industries Ltd
 315 Flaxton Road, Rangiora, 7400
 Canterbury, New Zealand.
 Phone: 0064 (0) 3 313 9902
 Fax: 0064 (0) 3 313 9904
 Mobile 0064 (0) 21 33 66 23
 Email: daniel@danielsmith.co.nz

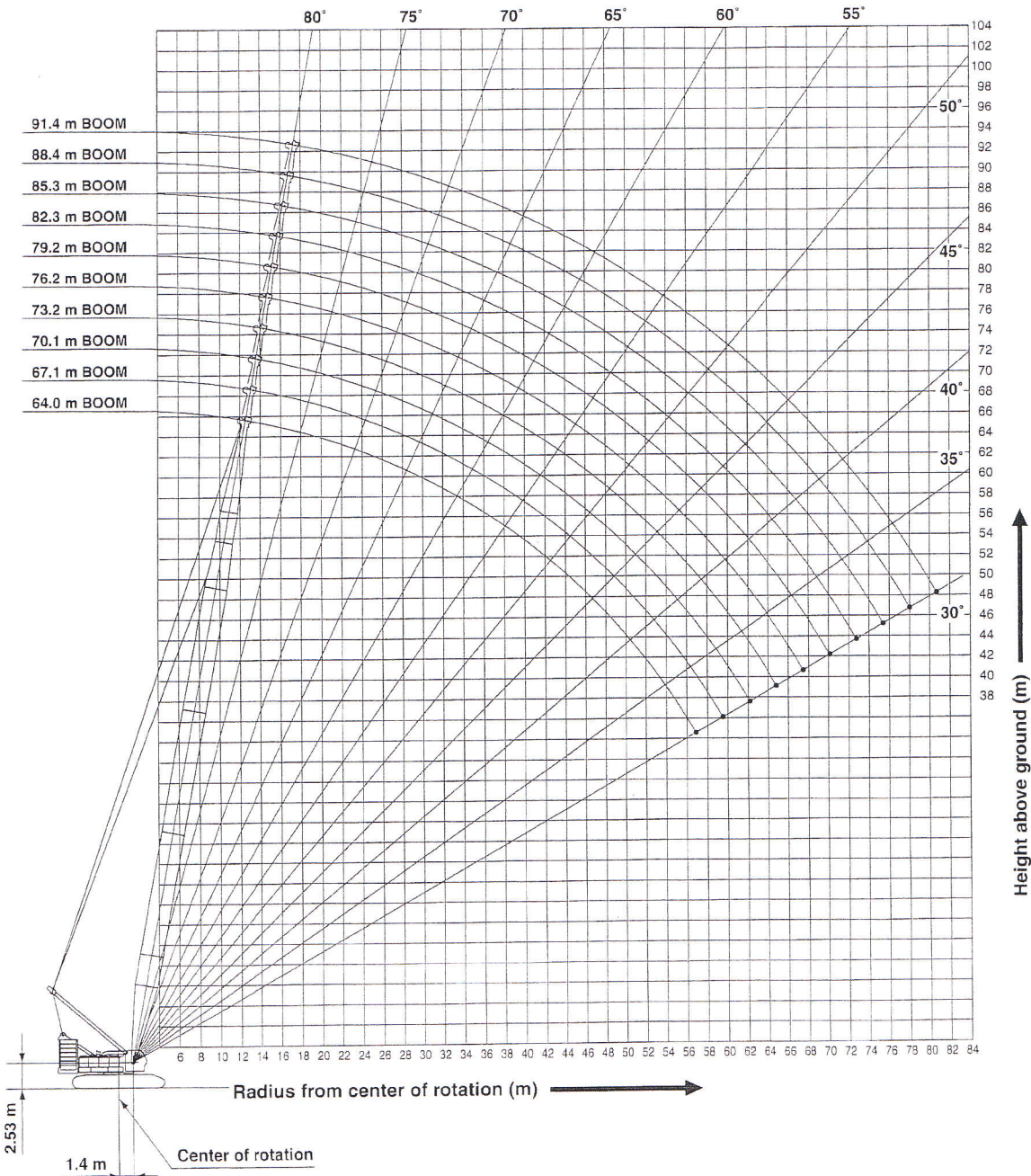
KOBELCO

CKE 2500-W-HD
300 ton Wind Special
Retractable Track Crawler Crane

Unit: metric ton

Page 9 of 27

Long Boom Working Ranges



NOTES:

1. Ratings according to EN13000.
2. Ratings in metric tons for 360° working area.
3. Operating radius is the horizontal distance from center of rotation to a vertical line through the center of gravity of the load.
4. Weight of hook block(s), slings and other load handling accessories is included in rated load. Their total weight must be subtracted from rated load to obtain weight that can be lifted.
5. Ratings shown are based on freely suspended loads and make no allowance for such factors as wind effect on lifted load, ground conditions out-of-level, operating speeds or any other condition that could be detrimental to the safe operation of this equipment. Operator, therefore, has the responsibility to judge the existing conditions and reduce lifted loads and operating speeds accordingly.
6. Ratings are for operation on a firm and level surface, up to 1% gradient.
7. At radii and boom lengths where no ratings are shown on chart, operation is not intended nor approved.
8. Boom inserts and guy lines must be arranged as shown in the "Operator's Manual".
9. Boom hoist reeving is 16 part line.
10. Gantry must be in raised position for all conditions.
11. Boom backstops are required for all boom lengths.
12. The boom should be erected over the front of crawlers, not laterally.
13. Ratings shown in are determined by the strength of the boom or other structural component.
14. Instruction in the "Operator's Manual" must be strictly observed when operating the machine.
15. Long boom ratings: Deduct weight of hook block, slings, and all other load handling accessories from long boom ratings shown.
16. Auxiliary sheave ratings for long boom: Deduct weight of hook block, slings, and all other load handling accessories from auxiliary sheave ratings for long boom shown.
17. Long boom lengths for auxiliary sheave mounting are 64.0 m to 91.4 m.



Daniel Smith Industries Ltd
 315 Flaxton Road, Rangiora, 7400
 Canterbury, New Zealand.
 Phone: 0064 (0) 3 313 9902
 Fax: 0064 (0) 3 313 9904
 Mobile 0064 (0) 21 33 66 23
 Email: daniel@danielsmith.co.nz

KOBELCO

CKE 2500-W-HD
300 ton Wind Special
Retractable Track Crawler Crane

Unit: metric ton

Page 10 of 27

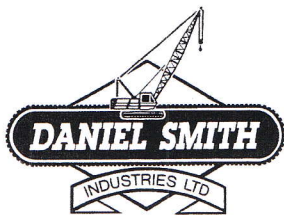
Long Boom Lifting Capacity

Counterweight: 90.0t, Carbody weight: 24.0t

Working radius (m) \ Boom length (m)	64.0	67.1	70.1	73.2	76.2	79.2	82.3	Working radius (m) \ Boom length (m)
12.0	12.8 m/47.1	13.3 m/46.1	13.8 m/45.0					12.0
14.0	45.0	44.9	44.8	14.3 m/44.2	14.9 m/41.1	15.4 m/36.2	15.9 m/32.3	14.0
16.0	42.0	41.9	41.8	41.7	39.6	35.5	32.2	16.0
18.0	39.4	39.3	39.2	39.1	37.2	33.2	30.1	18.0
20.0	37.2	37.1	37.0	36.9	35.1	31.3	28.3	20.0
22.0	35.2	35.1	35.0	34.9	33.3	29.6	26.7	22.0
24.0	33.4	33.3	33.2	33.1	31.7	28.0	25.2	24.0
26.0	31.5	31.3	31.2	30.9	30.2	26.7	24.0	26.0
28.0	28.5	28.3	28.1	27.9	27.8	25.5	22.8	28.0
30.0	25.9	25.7	25.6	25.4	25.3	24.4	21.8	30.0
32.0	23.7	23.5	23.4	23.1	23.0	22.9	20.9	32.0
34.0	21.8	21.6	21.5	21.2	21.1	21.0	20.1	34.0
36.0	20.1	19.9	19.8	19.5	19.4	19.3	19.2	36.0
38.0	18.7	18.4	18.3	18.1	18.0	17.9	17.8	38.0
40.0	17.3	17.1	17.0	16.7	16.6	16.5	16.4	40.0
42.0	16.2	15.9	15.8	15.5	15.4	15.3	15.2	42.0
44.0	15.1	14.8	14.7	14.5	14.4	14.3	14.2	44.0
46.0	14.1	13.9	13.7	13.5	13.4	13.3	13.2	46.0
48.0	13.3	13.0	12.9	12.6	12.5	12.4	12.3	48.0
50.0	12.5	12.2	12.1	11.8	11.7	11.6	11.5	50.0
52.0	11.7	11.5	11.3	11.1	11.0	10.9	10.8	52.0
54.0	11.1	10.8	10.7	10.4	10.3	10.2	10.1	54.0
56.0	10.4	10.2	10.0	9.8	9.7	9.6	9.5	56.0
58.0	56.9 m/ 10.2	9.6	9.5	9.2	9.1	9.0	8.9	58.0
60.0		59.6 m/ 9.2	8.9	8.7	8.6	8.5	8.4	60.0
62.0			8.5	8.2	8.1	8.0	7.9	62.0
64.0			62.2 m/ 8.4	7.7	7.6	7.5	7.4	64.0
66.0				64.9 m/ 7.6	7.2	7.1	7.0	66.0
68.0					67.5 m/ 6.9	6.8	6.7	68.0
70.0						6.4	6.3	70.0
72.0						70.2 m/ 6.3	6.0	72.0
74.0							72.8 m/ 5.9	74.0
Reeves	4	4	4	4	4	3	3	Reeves

Working radius (m) \ Boom length (m)	85.3	88.4	91.4	Working radius (m) \ Boom length (m)
16.0	16.5 m/27.0	17.0 m/24.9	17.5 m/21.3	16.0
18.0	27.0	24.0	20.9	18.0
20.0	25.3	22.4	19.5	20.0
22.0	23.9	21.1	18.3	22.0
24.0	22.6	19.9	17.3	24.0
26.0	21.4	18.9	16.3	26.0
28.0	20.4	18.0	15.5	28.0
30.0	19.5	17.1	14.8	30.0
32.0	18.6	16.4	14.1	32.0
34.0	17.9	15.7	13.6	34.0
36.0	17.2	15.1	13.0	36.0
38.0	16.6	14.6	12.6	38.0
40.0	16.1	14.1	12.1	40.0
42.0	15.1	13.6	11.7	42.0
44.0	14.1	13.2	11.4	44.0
46.0	13.1	12.8	11.0	46.0
48.0	12.2	12.3	10.7	48.0
50.0	11.4	11.3	10.5	50.0
52.0	10.7	10.6	10.2	52.0
54.0	10.0	9.9	9.8	54.0
56.0	9.4	9.3	9.2	56.0
58.0	8.8	8.7	8.6	58.0
60.0	8.3	8.2	8.1	60.0
62.0	7.8	7.7	7.6	62.0
64.0	7.3	7.2	7.1	64.0
66.0	6.9	6.8	6.7	66.0
68.0	6.6	6.5	6.4	68.0
70.0	6.2	6.1	5.9	70.0
72.0	5.9	5.8	5.7	72.0
74.0	5.6	5.5	5.4	74.0
76.0	75.4 m/5.4	5.3	5.1	76.0
78.0		4.9	4.8	78.0
80.0			4.5	80.0
82.0			80.7 m/4.4	82.0
84.0				84.0
Reeves	2	2	2	Reeves

Note.
 Ratings according to EN13000
 Ratings shown in I I are determined by
 the strength of the boom or other structural
 components.
 Refer to notes page 7.



Daniel Smith Industries Ltd
 315 Flaxton Road, Rangiora, 7400
 Canterbury, New Zealand.
 Phone: 0064 (0) 3 313 9902
 Fax: 0064 (0) 3 313 9904
 Mobile 0064 (0) 21 33 66 23
 Email: daniel@danielsmith.co.nz

KOBELCO

CKE 2500-W-HD
300 ton Wind Special
Retractable Track Crawler Crane

Unit: metric ton

Page 11 of 27

Auxiliary Sheave Lifting Capacity for Long Boom (With 35 t Main Hook)

Counterweight: 90.0t, Carbody weight: 24.0t

Working radius (m)	Boom length (m)												Working radius (m)
	64.0	67.1	70.1	73.2	76.2	79.2	82.3	85.3	88.4	91.4			
12.0	13.5 m/13.5												12.0
14.0	13.5	13.5	14.5 m/13.5	15.0 m/13.5	15.6 m/13.5								14.0
16.0	13.5	13.5	13.5	13.5	13.5	16.1 m/13.5	16.6 m/13.5	17.2 m/13.5	17.7 m/13.5				16.0
18.0	13.5	13.5	13.5	13.5	13.5	13.5	13.5	13.5	13.5	13.5	18.2 m/13.5		18.0
20.0	13.5	13.5	13.5	13.5	13.5	13.5	13.5	13.5	13.5	13.5	13.5		20.0
22.0	13.5	13.5	13.5	13.5	13.5	13.5	13.5	13.5	13.5	13.5	13.5		22.0
24.0	13.5	13.5	13.5	13.5	13.5	13.5	13.5	13.5	13.5	13.5	13.5		24.0
26.0	13.5	13.5	13.5	13.5	13.5	13.5	13.5	13.5	13.5	13.5	13.5		26.0
28.0	13.5	13.5	13.5	13.5	13.5	13.5	13.5	13.5	13.5	13.5	13.5		28.0
30.0	13.5	13.5	13.5	13.5	13.5	13.5	13.5	13.5	13.5	13.5	13.5		30.0
32.0	13.5	13.5	13.5	13.5	13.5	13.5	13.5	13.5	13.5	13.5	12.8		32.0
34.0	13.5	13.5	13.5	13.5	13.5	13.5	13.5	13.5	13.5	13.5	12.3		34.0
36.0	13.5	13.5	13.5	13.5	13.5	13.5	13.5	13.5	13.5	13.5	11.7		36.0
38.0	13.5	13.5	13.5	13.5	13.5	13.5	13.5	13.5	13.5	13.3	11.3		38.0
40.0	13.5	13.5	13.5	13.5	13.5	13.5	13.5	13.5	13.5	12.8	10.8		40.0
42.0	13.5	13.5	13.5	13.5	13.5	13.5	13.5	13.5	13.5	12.3	10.4		42.0
44.0	13.5	13.5	13.4	13.2	13.1	13.0	12.9	12.8	11.9	11.9	10.1		44.0
46.0	12.8	12.6	12.4	12.2	12.1	12.0	11.9	11.8	11.5	11.5	9.7		46.0
48.0	12.0	11.7	11.6	11.3	11.2	11.1	11.0	10.9	11.0	11.0	9.4		48.0
50.0	11.2	10.9	10.8	10.5	10.4	10.3	10.2	10.1	10.0	10.0	9.2		50.0
52.0	10.4	10.2	10.0	9.8	9.7	9.6	9.5	9.4	9.3	9.3	8.9		52.0
54.0	9.8	9.5	9.4	9.1	9.0	8.9	8.8	8.7	8.6	8.6	8.5		54.0
56.0	9.1	8.9	8.7	8.5	8.4	8.3	8.2	8.1	8.0	8.0	7.9		56.0
58.0	8.4	8.3	8.2	7.9	7.8	7.7	7.6	7.5	7.4	7.4	7.3		58.0
60.0		7.7	7.6	7.4	7.3	7.2	7.1	7.0	6.9	6.9	6.8		60.0
62.0		60.7 m/7.5	7.2	6.9	6.8	6.7	6.6	6.5	6.4	6.4	6.3		62.0
64.0			63.3 m/6.9	6.4	6.3	6.2	6.1	6.0	5.9	5.9	5.8		64.0
66.0				5.9	5.9	5.8	5.7	5.6	5.5	5.5	5.4		66.0
68.0					5.5	5.5	5.4	5.3	5.2	5.2	5.1		68.0
70.0					68.6 m/5.4	5.1	5.0	4.9	4.8	4.8	4.6		70.0
72.0						71.3 m/4.8	4.7	4.6	4.5	4.5	4.4		72.0
74.0							73.9 m/4.4	4.3	4.2	4.2	4.1		74.0
76.0								4.0	4.0	4.0	3.8		76.0
78.0									76.5 m/3.9	3.8	3.5		78.0
80.0										79.1 m/3.7	3.2		80.0
82.0											81.8 m/2.9		82.0
Reeves	1	1	1	1	1	1	1	1	1	1	1		Reeves

Note.

Ratings according to EN13000

Ratings shown in I I are determined by the strength of the boom or other structural components.

Refer to notes page 7.



Daniel Smith Industries Ltd
 315 Flaxton Road, Rangiora, 7400
 Canterbury, New Zealand.
 Phone: 0064 (0) 3 313 9902
 Fax: 0064 (0) 3 313 9904
 Mobile 0064 (0) 21 33 66 23
 Email: daniel@danielsmith.co.nz

KOBELCO

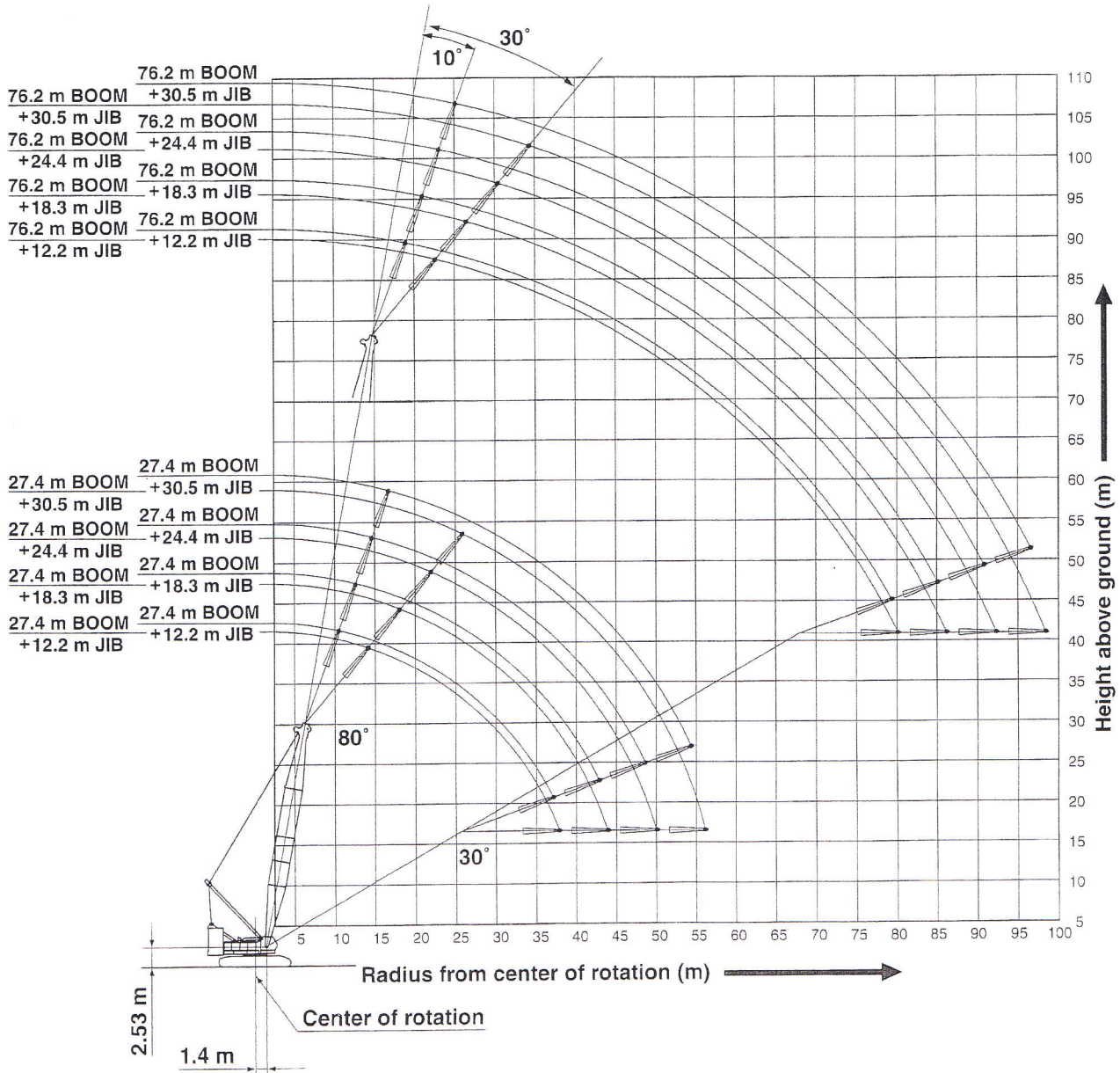
CKE 2500-W-HD
300 ton Wind Special
Retractable Track Crawler Crane

Unit: metric ton

Page 12 of 27

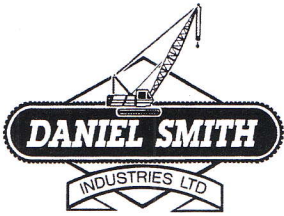
Fixed Jib Working Ranges

Jib Offset Angle: 10°, 30°



NOTES:

1. Ratings according to EN13000.
2. Ratings in metric tons for 360° working area.
3. Operating radius is the horizontal distance from center of rotation to a vertical line through the center of gravity of the load.
4. Weight of hook block(s), slings and other load handling accessories is included in rated load. Their total weight must be subtracted from rated load to obtain weight that can be lifted.
5. Ratings shown are based on freely suspended loads and make no allowance for such factors as wind effect on lifted load, ground conditions out-of-level, operating speeds or any other condition that could be detrimental to the safe operation of this equipment. Operator, therefore, has the responsibility to judge the existing conditions and reduce lifted loads and operating speeds accordingly.
6. Ratings are for operation on a firm and level surface, up to 1% gradient.
7. At radii and boom lengths where no ratings are shown on chart, opera-
8. Boom/ jib inserts and guy lines must be arranged as shown in the "Operator's Manual".
9. Boom hoist reeving is 16 part line.
10. Gantry must be in raised position for all conditions.
11. Boom backstops are required for all boom lengths.
12. The boom should be erected over the front of crawlers, not laterally.
13. Ratings shown in are determined by the strength of the boom or other structural component.
14. When erecting or lowering the boom length of 76.2 m, the pillow plate for erection must be placed at the end of crawlers.
15. Instruction in the "Operator's Manual" must be strictly observed when operating the machine.
16. Fixed jib ratings: Deduct weight of jib hook block, slings, and all other load handling accessories from fixed jib ratings shown.
17. Crane boom lengths for fixed jib mounting are 27.4 m to 76.2 m.



Daniel Smith Industries Ltd
 315 Flaxton Road, Rangiora, 7400
 Canterbury, New Zealand.
 Phone: 0064 (0) 3 313 9902
 Fax: 0064 (0) 3 313 9904
 Mobile 0064 (0) 21 33 66 23
 Email: daniel@danielsmith.co.nz

KOBELCO

CKE 2500-W-HD
300 ton Wind Special
Retractable Track Crawler Crane

Unit: metric ton

Page 14 of 27

Fixed Jib Lifting Capacities (Without Main Hook)

Jib Offset Angle: 30°

Counterweight: 90.0t, Carbody weight: 24.0t

Jib length (m)	27.4				36.6				45.7				54.9				Jib length (m)
	12.2	18.3	24.4	30.5	12.2	18.3	24.4	30.5	12.2	18.3	24.4	30.5	12.2	18.3	24.4	30.5	
14.0	14.1 m/19.3				15.7 m/19.3												14.0
16.0	18.7				19.2				17.3 m/19.2								16.0
18.0	17.9	13.5			18.7	19.6 m/13.5			19.1				18.9 m/19.2				18.0
20.0	16.8	13.5	21.9 m/8.2		18.1	13.5			18.7	21.2 m/13.5			19.0				20.0
22.0	15.9	13.1	8.2		17.2	13.5	23.5 m/8.1		18.2	13.5			18.6	22.8 m/13.5			22.0
24.0	15.2	12.6	7.9	25.9 m/4.4	16.4	13.1	8.1		17.4	13.4	25.1 m/8.1		18.2	13.5			24.0
26.0	14.5	12.0	7.6	4.4	15.7	12.8	7.9	27.5 m/4.3	16.7	13.2	8.0		17.6	13.4	26.7 m/8.1		26.0
28.0	13.9	11.4	7.4	4.2	15.1	12.3	7.6	4.3	16.1	12.9	7.8	29.0 m/4.4	17.0	13.2	8.0		28.0
30.0	13.4	10.9	7.2	4.1	14.6	11.8	7.4	4.2	15.6	12.5	7.6	4.3	16.4	12.9	7.8	30.6 m/4.3	30.0
34.0	12.7	10.0	6.8	3.8	13.7	10.9	7.1	4.0	14.6	11.6	7.3	4.1	15.5	12.2	7.5	4.2	34.0
38.0	37.9 m/12.4	9.4	6.5	3.7	13.0	10.2	6.8	3.8	13.9	10.9	7.0	3.9	14.7	11.5	7.2	4.0	38.0
42.0		9.0	6.2	3.5	12.6	9.6	6.5	3.6	13.3	10.3	6.7	3.7	14.0	10.9	6.9	3.8	42.0
46.0		44.0 m/8.9	6.1	3.3	45.8 m/12.4	9.2	6.3	3.5	12.8	9.8	6.5	3.6	13.2	10.4	6.7	3.7	46.0
50.0			6.1	3.3		8.9	6.1	3.4	12.1	9.4	6.3	3.5	11.4	9.9	6.5	3.6	50.0
54.0			50.1 m/6.1	3.0	51.9 m/8.9	6.1	3.3	53.7 m/10.7	9.1	6.2	3.4	9.9	9.5	6.4	3.5	54.0	
58.0				56.2 m/2.8			6.1	3.1		8.9	6.1	3.3	8.6	9.2	6.2	3.4	58.0
62.0								2.9		59.8 m/8.9	6.1	3.3	61.6 m/7.6	8.2	6.1	3.3	62.0
66.0								64.1 m/2.8			65.9 m/6.1	3.1		7.2	6.0	3.2	66.0
70.0												2.9		67.7 m/6.8	6.0	3.2	70.0
74.0													72.0 m/2.8			3.1	74.0
78.0																2.9	78.0
82.0																79.9 m/2.8	82.0
Reeves	2	1	1	1	2	1	1	1	2	1	1	1	2	1	1	1	Reeves

Jib length (m)	64.0				73.2				76.2				Jib length (m)
	12.2	18.3	24.4	30.5	12.2	18.3	24.4	30.5	12.2	18.3	24.4	30.5	
20.0	20.5 m/19.2												20.0
22.0	18.9				19.1				22.6 m/19.1				22.0
24.0	18.6	24.4 m/13.5			18.8				18.9				24.0
26.0	18.3	13.5			18.6	13.5			18.7	26.5 m/13.5			26.0
28.0	17.7	13.4	28.3 m/8.1		18.3	13.5	29.9 m/8.1		18.4	13.5			28.0
30.0	17.2	13.2	7.9	32.2 m/4.3	17.8	13.4	8.0	33.8 m/4.3	18.0	13.4	30.4 m/8.0		30.0
34.0	16.2	12.8	7.6	4.2	16.8	13.0	7.8	4.3	17.0	13.1	7.8	34.3 m/4.3	34.0
38.0	15.4	12.0	7.4	4.1	16.0	12.5	7.5	4.1	16.2	12.7	7.5	4.2	38.0
42.0	14.6	11.4	7.1	3.9	13.9	11.9	7.3	4.0	13.6	12.0	7.3	4.0	42.0
46.0	12.4	10.9	6.9	3.8	11.7	11.3	7.1	3.8	11.5	11.5	7.1	3.9	46.0
50.0	10.7	10.4	6.7	3.7	10.0	10.9	6.9	3.7	9.7	10.6	6.9	3.8	50.0
54.0	9.2	10.0	6.5	3.6	8.5	9.3	6.7	3.6	8.2	9.1	6.7	3.7	54.0
58.0	7.9	8.7	6.4	3.4	7.2	8.0	6.5	3.5	6.9	7.7	6.6	3.5	58.0
62.0	6.8	7.5	6.3	3.4	6.1	6.9	6.4	3.4	5.8	6.6	6.4	3.5	62.0
66.0	5.8	6.5	6.1	3.3	5.1	5.8	6.3	3.4	4.8	5.6	6.1	3.4	66.0
70.0	69.6 m/5.1	5.6	6.1	3.3	4.2	5.0	5.5	3.3	3.9	4.7	5.2	3.3	70.0
74.0		4.8	5.3	3.2	3.4	4.2	4.7	3.3	3.2	3.9	4.4	3.3	74.0
78.0		75.7 m/4.5	4.6	3.2	77.5 m/2.9	3.4	3.9	3.2	2.5	3.2	3.7	3.2	78.0
82.0			81.8 m/3.9	3.0		2.8	3.3	3.2	80.1 m/2.2	2.5	3.0	3.2	82.0
86.0				2.9		83.6 m/2.5	2.7	2.9		1.9	2.4	2.8	86.0
90.0				87.8 m/2.8			89.7 m/2.1	2.5		86.2 m/1.9	1.8	2.3	90.0
94.0								2.0			92.3 m/1.5	1.8	94.0
98.0								95.8 m/1.7				1.4	98.0
100.0												98.4 m/1.3	100.0
Reeves	2	1	1	1	2	1	1	1	2	1	1	1	Reeves

Note: Ratings according to EN13000.
 Ratings shown in [] are determined by the strength of the boom or other structural components.
 Refer to notes P21.



Daniel Smith Industries Ltd
 315 Flaxton Road, Rangiora, 7400
 Canterbury, New Zealand.
 Phone: 0064 (0) 3 313 9902
 Fax: 0064 (0) 3 313 9904
 Mobile 0064 (0) 21 33 66 23
 Email: daniel@danielsmith.co.nz

KOBELCO

CKE 2500-W-HD

300 ton Wind Special Retractable Track Crawler Crane

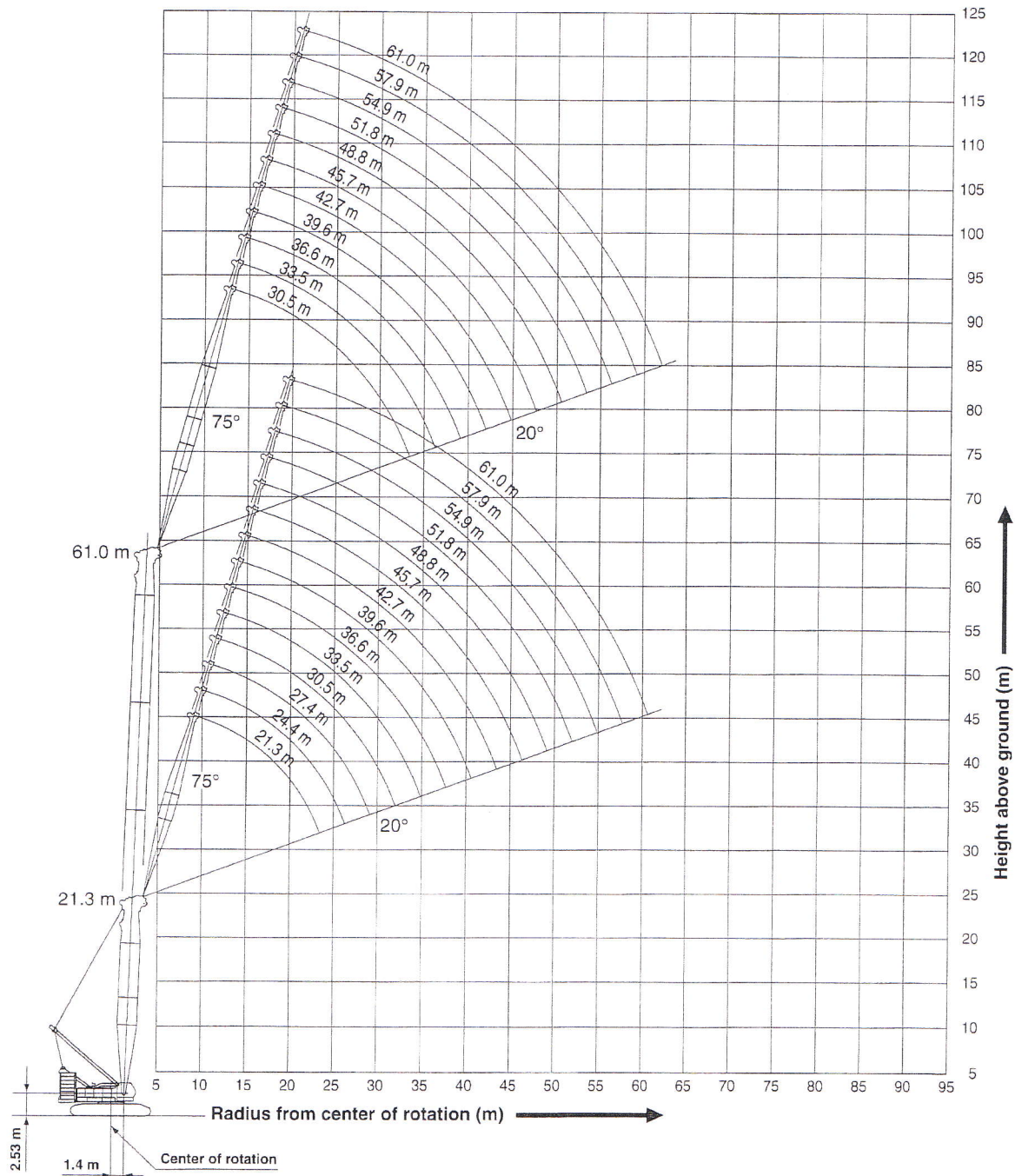
Unit: metric ton

Page 15 of 27

Luffing Jib Working Ranges

Boom Angle: 88°

Counterweight: 90.0t, Carbody weight: 24.0t



NOTES:

1. Ratings according to EN13000.
2. Ratings in metric tons for 360° working area.
3. Operating radius is the horizontal distance from center of rotation to a vertical line through the center of gravity of the load.
4. Weight of hook block(s), slings and other load handling accessories is included in rated load. Their total weight must be subtracted from rated load to obtain weight that can be lifted.
5. Ratings shown are based on freely suspended loads and make no allowance for such factors as wind effect on lifted load, ground conditions out-of-level, operating speeds or any other condition that could be

- detrimental to the safe operation of this equipment. Operator, therefore, has the responsibility to judge the existing conditions and reduce lifted loads and operating speeds accordingly.
6. Ratings are for operation on a firm and level surface, up to 1% gradient.
7. At radii and boom lengths where no ratings are shown on chart, operation is not intended nor approved.
8. Boom/jib inserts and guy lines must be arranged as shown in the "Operator's Manual".
9. Luffing boom hoist reeving is 16 part line.
10. Luffing jib hoist reeving is 10 part line.



Daniel Smith Industries Ltd
 315 Flaxton Road, Rangiora, 7400
 Canterbury, New Zealand.
 Phone: 0064 (0) 3 313 9902
 Fax: 0064 (0) 3 313 9904
 Mobile 0064 (0) 21 33 66 23
 Email: daniel@danielsmith.co.nz

KOBELCO

CKE 2500-W-HD
300 ton Wind Special
Retractable Track Crawler Crane

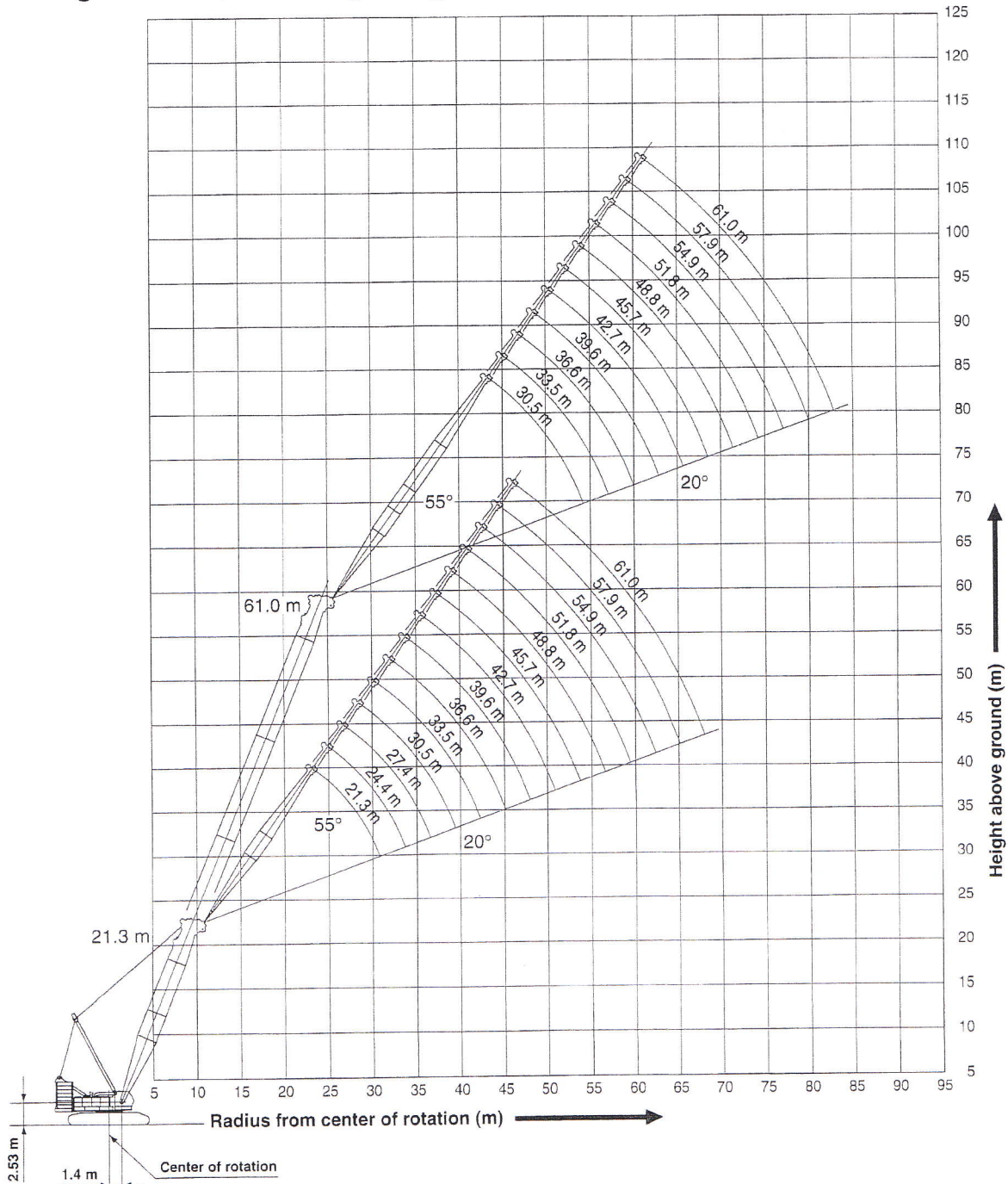
Unit: metric ton

Page 16 of 27

Luffing Jib Working Ranges

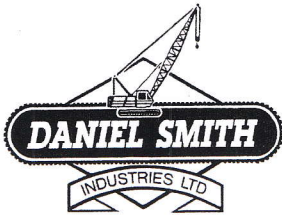
Boom Angle: 68°

Counterweight: 90.0t, Carbody weight: 24.0t



11. Gantry must be in raised position for all conditions.
12. Boom and jib backstops are required for all boom and jib combinations.
13. Ratings shown in are determined by the strength of the boom or other structural component.
14. The boom should be erected over the front of crawlers, not laterally.
15. When erecting or lowering the boom length of 54.9 m or over, the pillow plate for erection must be placed at the end of crawlers.
16. Instruction in the "Operator's Manual" must be strictly observed when operating the machine.

17. All luffing jib ratings and luffing boom ratings with luffing jib shown are calculated in the condition equipped with the auxiliary sheave frame.
18. Luffing jib ratings: Deduct weight of jib hook block, slings, and all other load handling accessories from luffing jib ratings shown.
19. Luffing boom ratings with luffing jib: Deduct weight of main hook block, slings and all other load handling accessories from luffing boom ratings with luffing jib shown.



Daniel Smith Industries Ltd
 315 Flaxton Road, Rangiora, 7400
 Canterbury, New Zealand.
 Phone: 0064 (0) 3 313 9902
 Fax: 0064 (0) 3 313 9904
 Mobile 0064 (0) 21 33 66 23
 Email: daniel@danielsmith.co.nz

KOBELCO

CKE 2500-W-HD
300 ton Wind Special
Retractable Track Crawler Crane

Unit: metric ton

Page 21 of 27

Luffing Jib Lifting Capacities (Without Main Hook)

Counterweight: 90.0t, Carbody weight: 24.0t

57.9 m Boom Length	57.9																Boom length (m)
	21.3				27.4				33.5				39.6				Jib length (m)
	88°	83°	68°	63°	88°	83°	68°	63°	88°	83°	68°	63°	88°	83°	68°	63°	Boom angle
12.0	40.5																12.0
14.0	38.4				39.5				37.2								14.0
16.0	35.4				35.7				35.5				27.0				16.0
18.0	33.0	40.5			32.4				32.3				27.0				18.0
20.0	30.0	37.3			29.6	36.3			29.6				27.0				20.0
22.0	27.5	33.7			27.2	33.0			27.2	32.8			27.0				22.0
24.0	25.2	30.7			25.1	30.2			25.1	30.1			25.0	27.0			24.0
26.0		28.0			23.3	27.7			23.3	27.6			23.2	27.0			26.0
28.0		25.7			21.6	25.5			21.7	25.5			21.6	25.3			28.0
30.0		23.6			20.1	23.6			20.2	23.6			20.1	23.5			30.0
34.0						20.4			17.7	20.5			17.7	20.4			34.0
38.0			15.8			36.0 m/19.0			36.0 m/16.5	17.9			15.6	17.9			38.0
42.0			13.8	44.0 m/11.8			13.6			15.7			13.8	15.8			42.0
46.0			44.0 m/13.0	11.2			12.0	48.0 m/10.2				11.7		14.0	48.0 m/10.7		46.0
50.0				48.0 m/10.5			10.8	9.7				10.4	52.0 m/8.8	48.0 m/13.2	10.1		50.0
54.0								8.7				9.4	8.3		9.1	56.0 m/7.4	54.0
58.0												56.0 m/8.9	7.4		8.2	7.0	58.0
62.0													60.0 m/7.0		7.4	6.3	62.0
66.0																5.7	66.0
Reeves			3				3			3				2			Reeves

57.9 m Boom Length	57.9																Boom length (m)
	45.7				51.8				57.9				61.0				Jib length (m)
	88°	83°	68°	63°	88°	83°	68°	63°	88°	83°	68°	63°	88°	83°	68°	63°	Boom angle
18.0	24.5																18.0
20.0	24.2				20.0												20.0
22.0	23.9				19.7				16.4				14.9				22.0
24.0	23.6				19.4				16.2				14.7				24.0
26.0	23.1	24.3			19.1				16.0				14.5				26.0
28.0	21.5	24.0			18.8				15.8				14.3				28.0
30.0	20.0	22.8			18.5	19.3			15.6	32.0 m/16.0			14.1	32.0 m/14.4			30.0
34.0	17.6	19.8			17.2	17.4			14.4	15.1			13.0	13.7			34.0
38.0	15.6	17.5			15.4	15.7			13.1	13.6			11.8	12.3			38.0
42.0	13.8	15.5			13.8	14.1			11.9	12.4			10.8	11.2			42.0
46.0	12.4	13.9			12.2	12.6			10.9	11.3			9.9	10.2			46.0
50.0	48.0 m/11.7	12.4	52.0 m/9.3		10.6	11.1			10.0	10.3			9.1	9.4			50.0
54.0		52.0 m/11.8	8.8		9.2	9.8	56.0 m/7.9		7.9	9.5			7.0	8.6			54.0
58.0			7.9	60.0 m/6.5		8.5	7.5		6.0	8.5	60.0 m/6.8		5.0	8.0			58.0
62.0			7.1	6.1		6.7	64.0 m/5.2	60.0 m/5.1	7.5	6.4			3.3	6.8	6.2		62.0
66.0			6.4	5.5		6.0	4.9		64.0 m/6.4	5.7	68.0 m/4.3			4.7	5.5		66.0
70.0			68.0 m/6.1	5.0		5.4	4.4			5.1	4.0		68.0 m/3.7	4.9	3.9		70.0
74.0				72.0 m/4.7			4.9	3.9			4.6	3.6			4.4	3.4	74.0
78.0								3.5			4.1	3.2			3.9	3.0	78.0
82.0											80.0 m/3.9	2.8			3.5	2.6	82.0
86.0												84.0 m/2.6					86.0
Reeves			2				2			2				2			Reeves

Note:
 Ratings according to EN13000.
 Ratings shown in are determined by the strength of the boom or other structural components.
 Refer to notes P25 and P26.



Daniel Smith Industries Ltd
 315 Flaxton Road, Rangiora, 7400
 Canterbury, New Zealand.
 Phone: 0064 (0) 3 313 9902
 Fax: 0064 (0) 3 313 9904
 Mobile 0064 (0) 21 33 66 23
 Email: daniel@danielsmith.co.nz

KOBELCO

CKE 2500-W-HD
300 ton Wind Special
Retractable Track Crawler Crane

Unit: metric ton

Page 22 of 27

Luffing Jib Lifting Capacities (Without Main Hook)

Counterweight: 90.0t, Carbody weight: 24.0t

5.0m Boom Length	61.0																	Working Radius (m)
	30.5				33.5				39.6				45.7				Jib length (m)	
	88°	83°	68°	63°	88°	83°	68°	63°	88°	83°	68°	63°	88°	83°	68°	63°		
14.0	35.0				27.0													14.0
16.0	31.6				27.0				27.0									16.0
18.0	28.7				27.0				27.0					23.6				18.0
20.0	26.2				26.1				26.0					23.3				20.0
22.0	24.1	29.4			24.0				23.8					23.0				22.0
24.0	22.2	26.9			22.1	25.8			22.0					21.8				24.0
26.0	20.6	24.6			20.5	23.8			20.4	23.6				20.2				26.0
28.0	19.1	22.7			19.0	22.0			18.9	21.8				18.8	21.6			28.0
30.0	17.8	21.0			17.7	20.4			17.6	20.2				17.5	20.1			30.0
34.0	15.5	18.1			15.5	17.7			15.4	17.6				15.3	17.5			34.0
38.0		15.7			36.0 m/14.5	15.5			13.6	15.4				13.5	15.3			38.0
42.0			44.0 m/12.2			13.7			12.0	13.6				12.0	13.5			42.0
46.0			11.5				11.2			12.1				10.7	12.1			46.0
50.0			10.2	52.0 m/8.5			10.0			48.0 m/11.4	9.7			48.0 m/10.1	10.8			50.0
54.0			9.2	8.0			9.0	7.9			8.7			9.6	8.3			54.0
58.0				7.1			8.1	7.1			7.8	6.7			7.4			58.0
62.0				60.0 m/6.8				6.4			7.0	6.0			6.7	5.6		62.0
66.0												5.4			6.0	5.0		66.0
70.0													68.0 m/5.1		68.0 m/5.7	4.5		70.0
74.0																4.1		74.0
Reeves		3				2				2				2				Reeves

Working Radius (m)	61.0												Working Radius (m)	
	51.8				57.9				61.0					Jib length (m)
	88°	83°	68°	63°	88°	83°	68°	63°	88°	83°	68°	63°		
20.0	19.4													20.0
22.0	19.1				15.9				14.5					22.0
24.0	18.8				15.7				14.3					24.0
26.0	18.5				15.5				14.1					26.0
28.0	17.5				15.3				13.9					28.0
30.0	16.4	18.6			15.1	32.0 m/15.5			13.7	32.0 m/14.1				30.0
34.0	14.5	16.4			13.5	14.6			13.0	13.6				34.0
38.0	12.9	14.5			12.2	13.0			11.8	12.3				38.0
42.0	11.6	12.9			11.0	11.7			10.7	11.1				42.0
46.0	10.4	11.5			10.0	10.7			9.8	10.2				46.0
50.0	9.5	10.3			9.0	9.7			8.4	9.3				50.0
54.0	8.6	9.3	56.0 m/7.5		7.1	8.9			6.3	8.6				54.0
58.0		8.4	7.1		5.3	8.2	60.0 m/6.3		4.4	7.9				58.0
62.0		60.0 m/7.7	6.3		60.0 m/4.4	6.5	6.0		2.8	6.2	5.8			62.0
66.0			5.6	4.4		4.8	5.3			4.2	5.1			66.0
70.0			5.0	3.9			4.7	3.6		68.0 m/3.2	4.6	72.0 m/3.2		70.0
74.0			4.5	3.5			4.2	3.2			4.0	3.0		74.0
78.0				3.1			3.8	2.8			3.6	76.0 m/2.8		78.0
82.0				80.0 m/2.9			80.0 m/3.6				3.2			82.0
Reeves		2				2				2				Reeves

Note:
 Ratings according to EN13000.
 Ratings shown in are determined by the strength of the boom or other structural components.
 Refer to notes P25 and P26.



Daniel Smith Industries Ltd
 315 Flaxton Road, Rangiora, 7400
 Canterbury, New Zealand.
 Phone: 0064 (0) 3 313 9902
 Fax: 0064 (0) 3 313 9904
 Mobile 0064 (0) 21 33 66 23
 Email: daniel@danielsmith.co.nz

KOBELCO

CKE 2500-W-HD
300 ton Wind Special
Retractable Track Crawler Crane

Unit: metric ton

Page 23 of 27

Luffing Boom Lifting Capacities with Luffing Jib Attached at 23 degree Boom to Luffing Jib Offset Angle

Counterweight: 90.0t, Carbody weight: 24.0t

21.3 m Boom Length	Boom length (m)	21.3					
	Jib length (m)	21.3	30.5	39.6	48.8	57.9	61.0
6.4 m	125.0	119.0	114.1	107.5	100.3	97.2	
7.0 m	125.0	119.0	114.1	107.5	100.3	97.2	
8.0 m	125.0	119.0	114.1	107.5	100.3	97.2	
9.0 m	111.7	106.6	102.7	97.3	91.6	89.1	
10.0 m	99.3	94.5	90.7	85.7	80.3	77.9	
12.0 m	72.6	68.2	64.8	61.2	55.2	53.0	
14.0 m	55.3	51.3	48.0	44.7	39.1	37.2	
16.0 m	43.9	40.1	37.0	33.8	28.6	26.8	
18.0 m	35.7	32.2	29.1	26.1	21.2	19.5	
Reeves	10	10	10	8	8	8	

30.5 m Boom Length	Boom length (m)	30.5					
	Jib length (m)	21.3	30.5	39.6	48.8	57.9	61.0
8.0 m	115.2	111.6	106.5	101.4	95.8	93.4	
9.0 m	107.3	103.9	99.3	94.5	89.3	87.1	
10.0 m	95.7	92.5	88.1	83.7	78.8	76.7	
12.0 m	72.9	70.0	66.0	62.0	57.6	55.7	
14.0 m	55.6	53.0	49.3	45.5	41.5	39.7	
16.0 m	44.0	41.6	38.1	34.5	30.7	29.1	
18.0 m	35.7	33.4	30.1	27.5	23.1	21.6	
20.0 m	29.3	27.1	23.9	21.4	17.2	15.8	
22.0 m	24.2	22.2	19.0	16.7	12.6	11.2	
24.0 m	20.2	18.2	15.1	12.9	9.0	7.7	
Reeves	10	10	8	8	8	7	

36.6 m Boom Length	Boom length (m)	36.6					
	Jib length (m)	21.3	30.5	39.6	48.8	57.9	61.0
10.0 m	93.5	89.2	84.6	80.3	75.8	73.8	
12.0 m	74.5	70.6	66.4	62.6	58.5	56.7	
14.0 m	57.1	53.5	49.7	46.2	42.3	40.7	
16.0 m	45.5	42.1	38.5	35.1	31.6	30.0	
18.0 m	37.1	33.9	30.4	27.3	23.9	22.4	
20.0 m	30.6	27.5	24.2	21.2	18.0	16.6	
22.0 m	25.5	22.5	19.3	16.4	13.3	12.0	
24.0 m	21.3	18.4	15.3	12.6	9.6	8.3	
26.0 m	18.0	15.2	12.2	9.5	6.6		
28.0 m	15.1	12.4	9.5	7.5			
30.0 m	12.9	10.2	7.4	5.5			
Reeves	7	7	7	6	6	6	

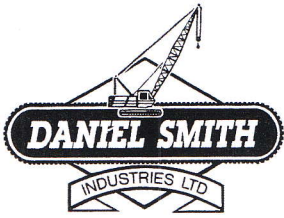
42.7 m Boom Length	Boom length (m)	42.7					
	Jib length (m)	21.3	30.5	39.6	48.8	57.9	61.0
12.0 m	71.6	67.5	63.5	59.9	55.9	54.2	
14.0 m	57.3	53.5	49.8	46.5	42.9	41.3	
16.0 m	45.7	42.1	38.6	35.5	32.1	30.6	
18.0 m	37.2	33.8	30.6	27.6	24.4	23.0	
20.0 m	30.6	27.4	24.2	21.4	18.3	17.0	
22.0 m	25.3	22.2	19.2	16.5	13.6	12.3	
24.0 m	21.2	18.2	15.2	12.6	9.8	8.6	
26.0 m	17.8	14.9	12.0	9.5	6.8		
28.0 m	14.9	12.1	9.3	6.9			
30.0 m	12.5	9.8	7.1	5.2			
32.0 m	10.5	7.8	5.2				
34.0 m	8.7	6.1					
Reeves	6	6	5	5	5	5	

48.8 m Boom Length	Boom length (m)	48.8					
	Jib length (m)	21.3	30.5	39.6	48.8	57.9	61.0
12.0 m	65.4	61.7	57.8	54.0	49.3	47.3	
14.0 m	55.8	52.5	48.5	46.2	41.8	40.3	
16.0 m	45.5	42.4	38.7	36.6	32.4	31.0	
18.0 m	37.1	34.2	30.6	28.6	24.7	23.4	
20.0 m	30.4	27.7	24.3	22.4	18.7	17.4	
22.0 m	25.2	22.5	19.3	17.4	13.9	12.6	
24.0 m	21.0	18.4	15.3	13.5	10.1	8.9	
26.0 m	17.6	15.1	12.1	10.3	7.0		
28.0 m	14.7	12.2	9.3	7.6			
30.0 m	12.3	9.9	7.0	5.4			
32.0 m	10.2	7.8	5.1				
34.0 m	8.4	6.1					
36.0 m	6.9						
38.0 m	5.5						
Reeves	5	5	5	5	4	4	

54.9 m Boom Length	Boom length (m)	54.9					
	Jib length (m)	21.3	30.5	39.6	48.8	57.9	61.0
14.0 m	51.2	47.7	44.6	41.6	37.3	35.8	
16.0 m	44.4	41.1	38.3	35.4	31.4	30.0	
18.0 m	37.1	34.0	31.3	28.6	24.8	23.5	
20.0 m	30.4	27.4	24.9	22.3	18.7	17.5	
22.0 m	25.2	22.3	19.8	17.4	13.9	12.7	
24.0 m	21.0	18.2	15.8	13.4	10.1	9.0	
26.0 m	17.5	14.7	12.5	10.2	7.0	5.9	
28.0 m	14.6	12.0	9.8	7.5			
30.0 m	12.1	9.5	7.4	5.2			
32.0 m	10.0	7.5	5.4				
34.0 m	8.2	5.7					
36.0 m	6.6						
38.0 m	5.2						
Reeves	4	4	4	4	3	3	

61.0 m Boom Length	Boom length (m)	61.0				
	Jib length (m)	30.5	39.6	48.8	57.9	61.0
14.0 m	46.2	43.6	40.0	35.8	34.3	
16.0 m	38.4	35.6	32.8	28.9	27.6	
18.0 m	32.6	30.0	27.4	23.7	22.4	
20.0 m	27.2	24.7	22.2	18.7	17.5	
22.0 m	22.1	19.7	17.4	14.0	12.9	
24.0 m	17.9	15.6	13.3	10.1	9.0	
26.0 m	14.6	12.3	10.2	7.0	6.0	
28.0 m	11.7	9.6	7.4			
30.0 m	9.3	7.2	5.1			
32.0 m	7.3	5.2				
34.0 m	5.5					
Reeves	4	4	3	3	3	

Note: Ratings according to EN13000.
 Ratings shown in [] are determined by the strength of the boom or other structural components.
 Refer to notes P25 and P26.



Daniel Smith Industries Ltd
 315 Flaxton Road, Rangiora, 7400
 Canterbury, New Zealand.
 Phone: 0064 (0) 3 313 9902
 Fax: 0064 (0) 3 313 9904
 Mobile 0064 (0) 21 33 66 23
 Email: daniel@danielsmith.co.nz

KOBELCO

CKE 2500-W-HD 300 ton Wind Special Retractable Track Crawler Crane

Dimensions: mm / Weight: Kgs

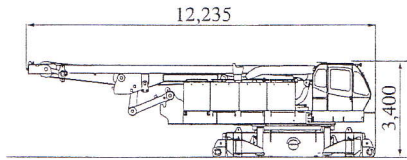
Page 24 of 27

PARTS AND ATTACHMENTS

Base Machine

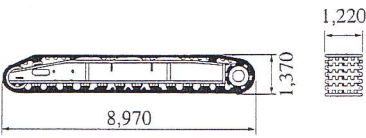
With trans-lifter, main and aux. winches (non-free fall) including wire rope and boom hoist winch including wire rope

Weight: 44,900 kg Width: 3,400 mm



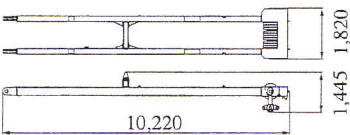
Crawler

Weight: 20,700 kg



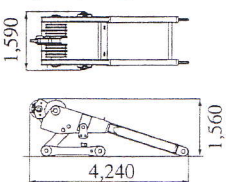
Mast

Weight: 2,870 kg

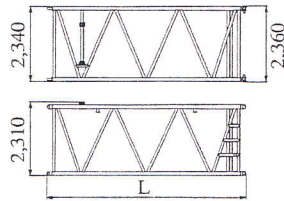


Gantry

Weight: 3,020 kg



Insert Boom

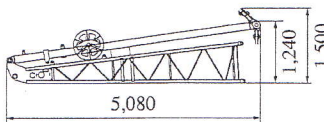


	L (mm)	Weight (kg)*
3.0m	3,175	890
6.1m	6,220	1,440
12.2m	12,320	2,540

*with boom guy cables

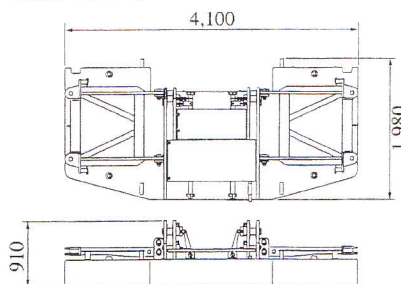
Jib Base with Strut (For Crane)

Weight: 510 kg Width: 1,040 mm



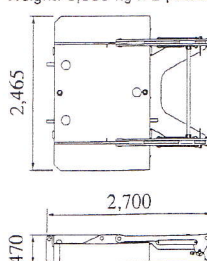
Counterweight A

Weight: 11,040 kg



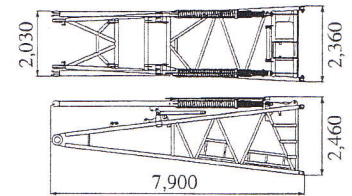
Carbodyweight A

Weight: 6,350 kg x 2 pieces



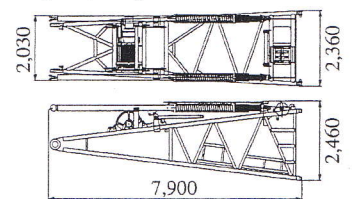
Boom Base

Weight: 4,665 kg



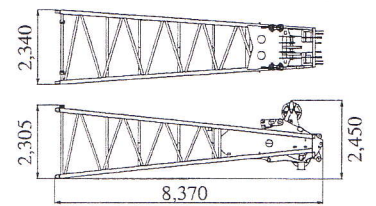
Boom Base (with Winch)

Weight: 6,810 kg



Boom Top

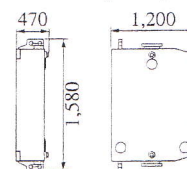
Weight: 3,720 kg (with boom guy cables)



Counterweight B, C

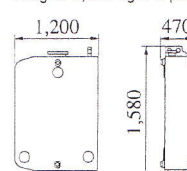
Weight:

Counterweight B: 5,625 kg x 7 pieces
 Counterweight C: 5,625 kg x 7 pieces



Carbodyweight B

Weight: 5,625 kg x 2 pieces





Daniel Smith Industries Ltd
 315 Flaxton Road, Rangiora, 7400
 Canterbury, New Zealand.
 Phone: 0064 (0) 3 313 9902
 Fax: 0064 (0) 3 313 9904
 Mobile 0064 (0) 21 33 66 23
 Email: daniel@danielsmith.co.nz

KOBELCO

CKE 2500-W-HD 300 ton Wind Special Retractable Track Crawler Crane

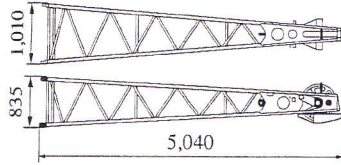
Dimensions: mm / Weight: Kgs

Page 25 of 27

PARTS AND ATTACHMENTS

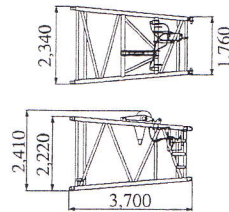
Jib Top (For Crane)

Weight: 315 kg



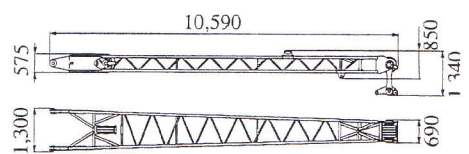
Luffing Tapered Boom

Weight: 1,190 kg



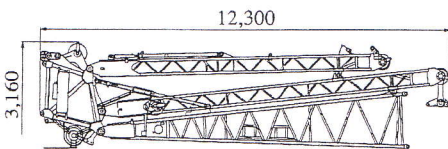
Front Strut (Luffing Jib)

Weight: 1,410 kg



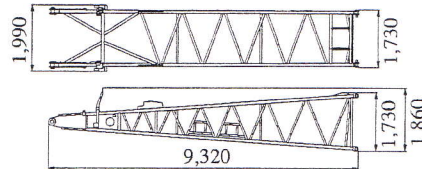
Travel Kit Assembly

Weight: 6,730 kg



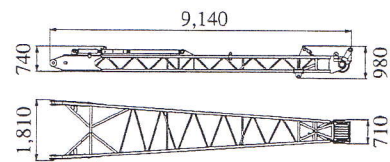
Luffing Jib Base

Weight: 1,470 kg



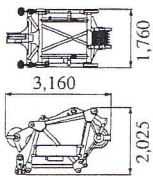
Rear Strut (Luffing Jib)

Weight: 1,510 kg



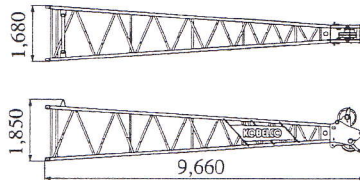
Luffing Boom Top

Weight: 2,085 kg



Luffing Jib Top

Weight: 1,400 kg



Other Attachments

Attachments	Weight	Dimensions (L x W x H)
3.0 m insert jib (for crane)	110 kg	3,130 mm x 1,020 mm x 840 mm
6.1 m insert jib (for crane)	190 kg	6,175 mm x 1,020 mm x 840 mm
Relay jib	400 kg (with guy cables)	3,170 mm x 1,670 mm x 1,690 mm
Tapered boom with idler sheave & link (for long)	1,170 kg	4,905 mm x 2,340 mm x 2,360 mm
3.0 m luffing insert jib	420 kg (with guy cables)	3,160 mm x 1,670 mm x 1,690 mm
6.1 m luffing insert jib	670 kg (with guy cables)	6,210 mm x 1,670 mm x 1,690 mm
12.2 m luffing insert jib	1,170 kg (with guy cables)	12,310 mm x 1,670 mm x 1,690 mm
Jib backstop (for luffing)	260 kg	3,580 mm x 250 mm x 280 mm (x 2 pieces)
Strut backstop (for luffing)	255 kg	3,390 mm x 210 mm dia. (x 2 pieces)
Auxiliary sheave (for crane)	290 kg	2,010 mm x 720 mm x 735 mm
Auxiliary sheave (for luffing)	380 kg	1,070 mm x 910 mm x 890 mm
Luffing jib drum	2,050 kg (with wire rope)	1,780 mm x 1,190 mm x 1,040 mm
250-ton hook	4,200 kg	2,310 mm x 1,620 mm x 720 mm
150-ton hook	2,300 kg	2,250 mm x 715 mm x 700 mm
70-ton hook	1,200 kg	1,825 mm x 380 mm x 700 mm
35-ton hook	900 kg	1,575 mm x 365 mm x 700 mm
Ball hook	450 kg	1,200 mm x 380 mm dia.

Note: Estimated weights may vary \pm 2%.



Daniel Smith Industries Ltd
 315 Flaxton Road, Rangiora, 7400
 Canterbury, New Zealand.
 Phone: 0064 (0) 3 313 9902
 Fax: 0064 (0) 3 313 9904
 Mobile 0064 (0) 21 33 66 23
 Email: daniel@danielsmith.co.nz

KOBELCO

CKE 2500-W-HD

300 ton Wind Special

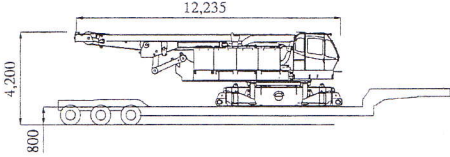
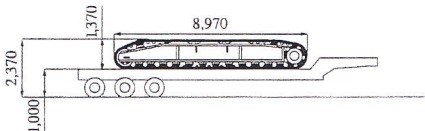
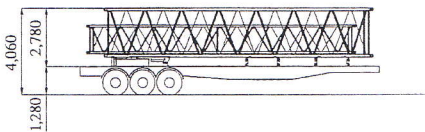
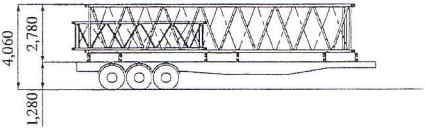
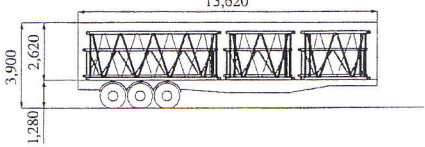
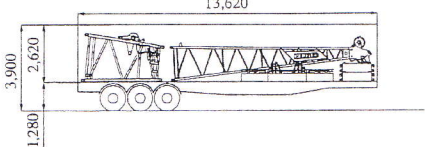
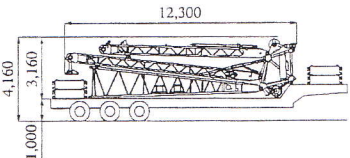
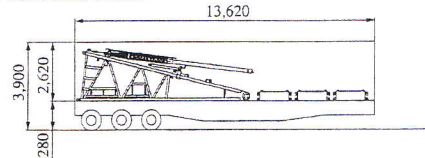
Retractable Track Crawler Crane

Dimensions: mm / Weight:: Kgs

Page 26 of 27

TRANSPORTATION PLAN

Luffing Boom 61.0 m + Luffing Jib 61.0 m

Configuration	Description	Total Weight
No.1 Low Loader 	Base Machine = With trans-lifter, main and aux. winches (non-free fall) including wire rope, boom hoist winch including wire rope	44.90 ton
No.2 Semi Loader 	Crawler = (2 x 20.7 ton)	41.40 ton
No.3 & No.4 Flat Bed Trailer 	Carbodyweight A x 1 = Counterweight (2 x 5.63 ton) = 12.2 m Insert Boom x 1 = 12.2 m Luffing Insert Jib x 1 = Total =	6.35 ton 11.26 ton 2.54 ton 1.17 ton <hr/> 21.32 ton
No.5 Flat Bed Trailer 	Counterweight (3 x 5.63 ton) = 12.2 m Insert Boom x 1 = 6.1 m Luffing Insert Jib x 1 = Total =	16.89 ton 2.54 ton 0.67 ton <hr/> 20.10 ton
No.6 Tent Side Truck 	3.0 m Insert Boom (2 x 0.89 ton) = 6.1 m Insert Boom x 1 = 6.1 m Luffing Insert Jib x 1 = 3.0 m Luffing Insert Jib x 1 = Relay Jib x 1 = Total =	1.78 ton 1.44 ton 0.67 ton 0.42 ton 0.40 ton <hr/> 4.71 ton
No.7 Tent Side Truck 	Luffing Jib Top x 1 = Luffing Tapered Boom x 1 = Counterweight (2 x 5.63 ton) = Counterweight A x 1 = Total =	1.40 ton 1.19 ton 11.26 ton 11.04 ton <hr/> 24.89 ton
No.8 Semi Loader 	Travel Kit Assembly = Counterweight (2 x 5.63 ton) = Carbodyweight B (2 x 5.63 ton) = Total =	6.73 ton 11.26 ton 11.26 ton <hr/> 29.25 ton
No.9 Tent Side Truck 	Boom Base x 1 = Counterweight (3 x 5.63 ton) = Total =	6.81 ton 16.89 ton <hr/> 23.70 ton

Note: Estimated weights may vary $\pm 2\%$.

This transportation plan depends on specifications of your trailers/trucks and the areas or countries where you transport.



Daniel Smith Industries Ltd
315 Flaxton Road, Rangiora, 7400
Canterbury, New Zealand.
Phone: 0064 (0) 3 313 9902
Fax: 0064 (0) 3 313 9904
Mobile 0064 (0) 21 33 66 23
Email: daniel@danielsmith.co.nz

KOBELCO

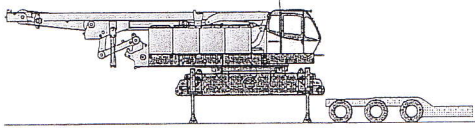
CKE 2500-W-HD
300 ton Wind Special
Retractable Track Crawler Crane

Dimensions: mm / Weight:: Kgs

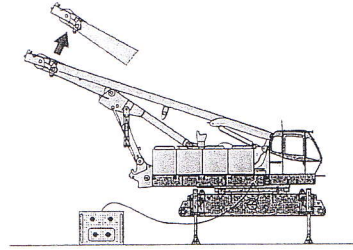
Page 27 of 27

SELF - REMOVAL DEVICE

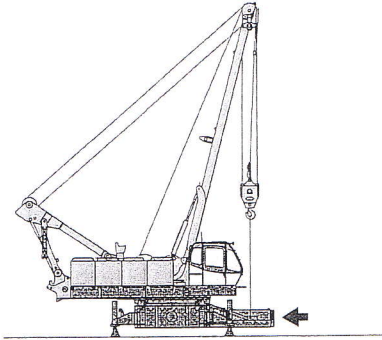
1



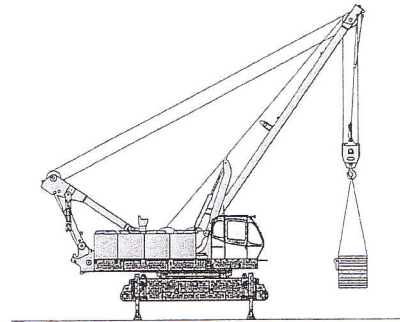
2



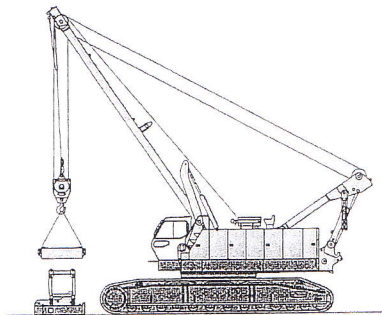
3



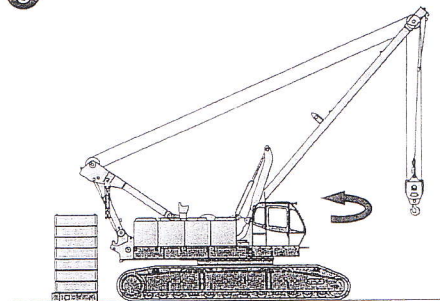
4



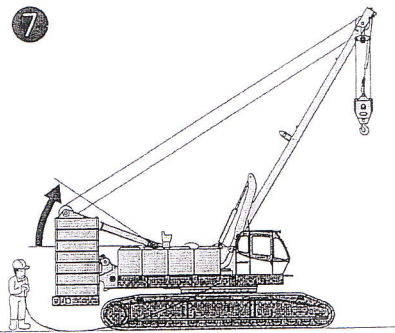
5



6



7



8

