



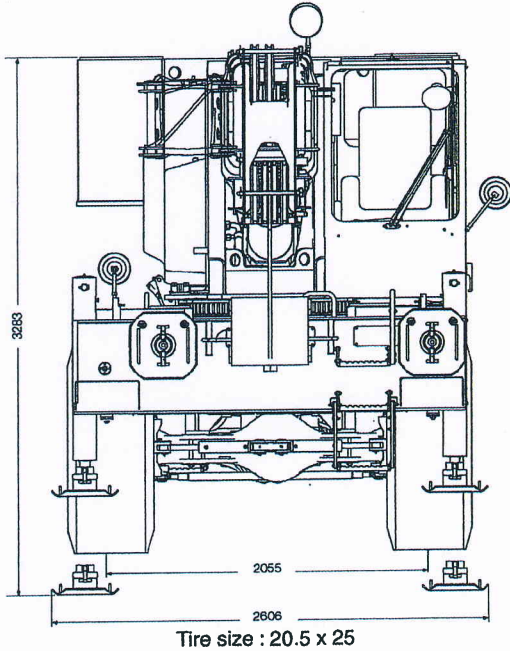
**Daniel Smith Industries Ltd**  
 315 Flaxton Road, Rangiora, 7400  
 Canterbury, New Zealand.  
 Phone: 0064 (0) 3 313 9902  
 Fax: 0064 (0) 3 313 9904  
 Mobile 0064 (0) 21 33 66 23  
 Email: [daniel@danielsmith.co.nz](mailto:daniel@danielsmith.co.nz)  
 Website: [www.danielsmithindustries.co.nz](http://www.danielsmithindustries.co.nz)

**GROVE**

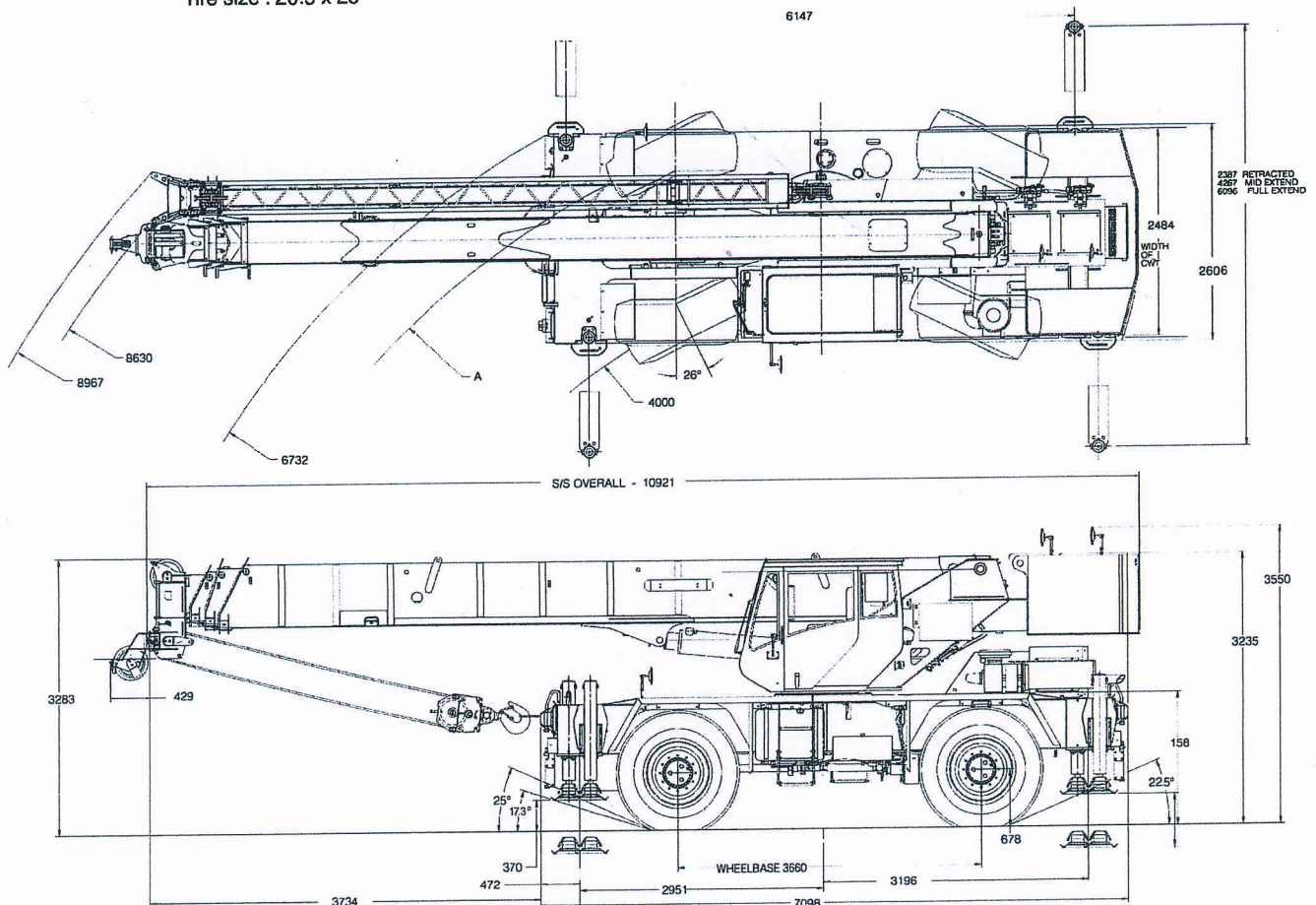
**RT530E-2**

**4 X 4 / 30-TON ROUGH TERRAIN CRANE**

# Dimensions



Weights	GVM (kg)	Front (kg)	Rear (kg)
RT530E-2 complete with Telescopic Swingaway and Two Hooks	27,600	14,200	13,400



Note: Reference dimensions in mm



**Daniel Smith Industries Ltd**

315 Flaxton Road, Rangiora, 7400  
 Canterbury, New Zealand.  
 Phone: 0064 (0) 3 313 9902  
 Fax: 0064 (0) 3 313 9904  
 Mobile 0064 (0) 21 33 66 23

Email: [daniel@danielsmith.co.nz](mailto:daniel@danielsmith.co.nz)

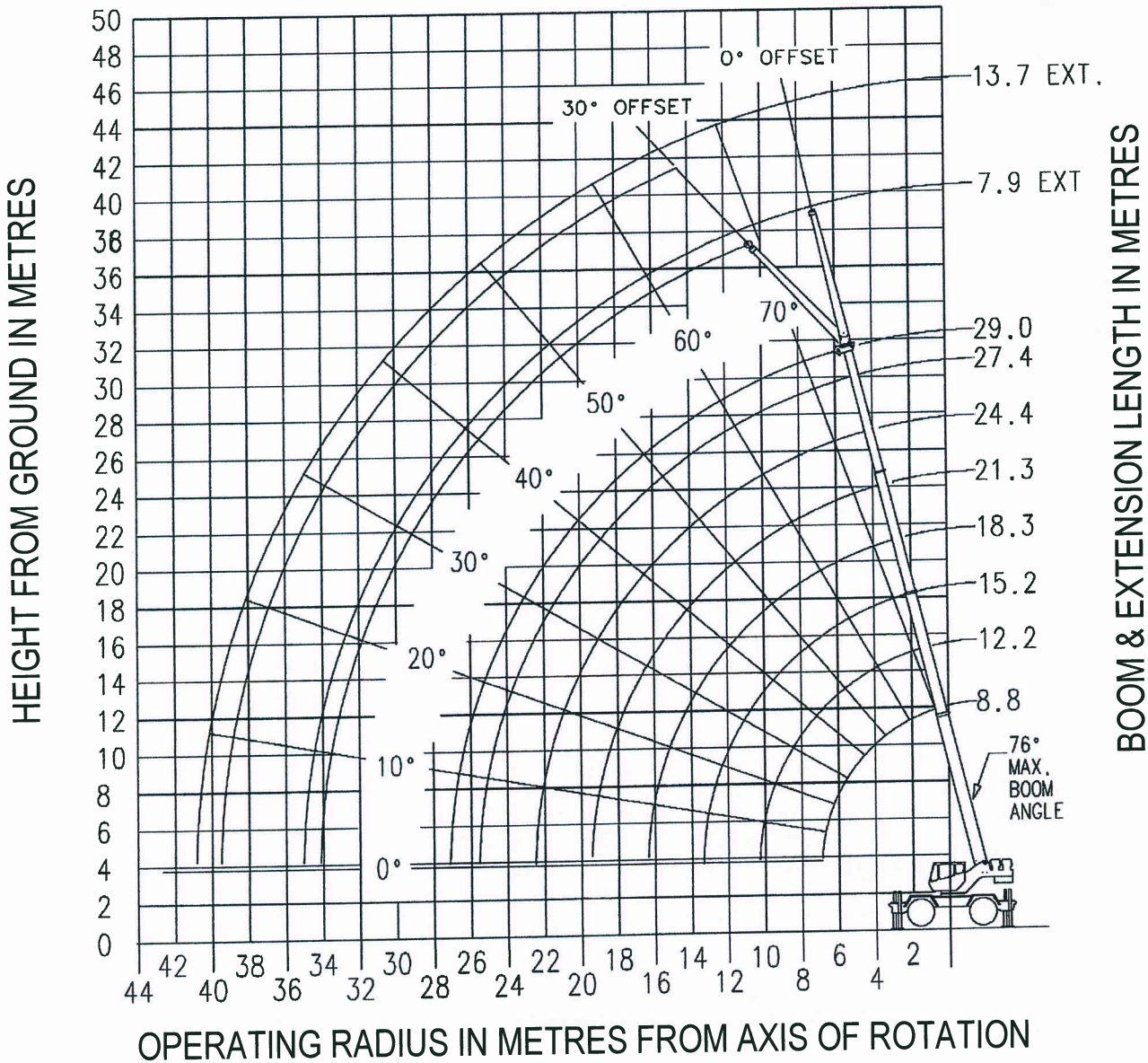
Website: [www.danielsmithindustries.co.nz](http://www.danielsmithindustries.co.nz)

**GROVE®**

**RT530E-2**

**4 X 4 / 30-TON ROUGH TERRAIN CRANE**

# Range Diagram



	<p><b>Maximum</b>  <b>2,5 m</b></p>
--	---



**Daniel Smith Industries Ltd**  
 315 Flaxton Road, Rangiora, 7400  
 Canterbury, New Zealand.  
 Phone: 0064 (0) 3 313 9902  
 Fax: 0064 (0) 3 313 9904  
 Mobile 0064 (0) 21 33 66 23  
 Email: [daniel@danielsmith.co.nz](mailto:daniel@danielsmith.co.nz)  
 Website: [www.danielsmithindustries.co.nz](http://www.danielsmithindustries.co.nz)

**GROVE®**

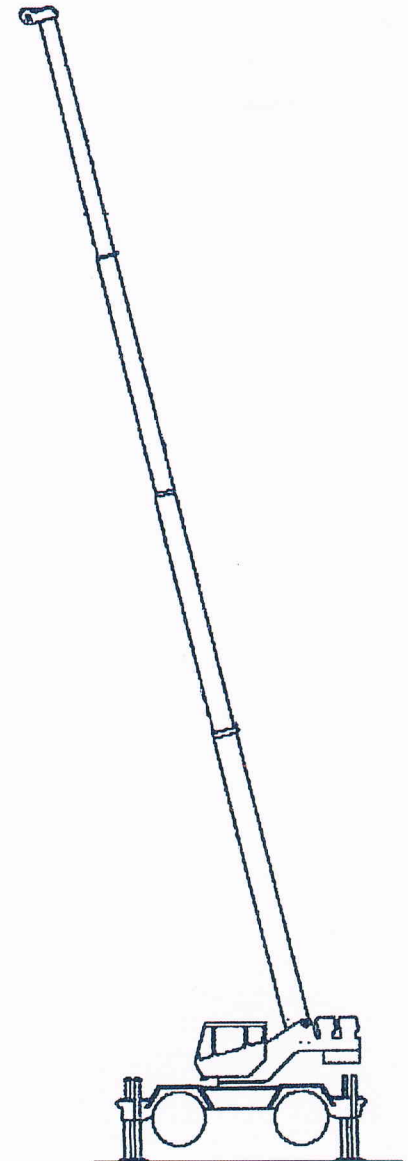
**RT530E-2**

**4 X 4 / 30-TON ROUGH TERRAIN CRANE**

**RATED LIFTING CAPACITIES IN KILOGRAMS**  
**8.8 m - 29.0 m BOOM**

**ON OUTRIGGERS FULLY EXTENDED - 360°**

Radius in Meters	#0001							
	Main Boom Length in Meters							
	8.8	12.2	15.2	18.3	21.3	24.4	27.4	29.0
2.5	30,000 (65)							
3	27,000 (61)	22,700 (70)	21,275 (74.5)					
3.5	24,200 (57)	22,700 (67.5)	20,625 (72.5)					
4	22,050 (53)	21,050 (64.5)	19,725 (70.5)	*17,600 (76)				
4.5	19,850 (48.5)	20,000 (62)	18,750 (68.5)	16,350 (72.5)	*11,250 (76)			
5	17,875 (43.5)	18,300 (59)	17,125 (66)	15,500 (71)	10,600 (74)	*9,525 (76)		
6	14,250 (31.5)	14,700 (53.5)	14,775 (62)	13,550 (67.5)	9,720 (71)	8,580 (74)	*7,375 (76)	
7		12,300 (47)	12,500 (57.5)	11,900 (64)	8,845 (68)	7,475 (71.5)	6,780 (74)	*6,395 (76)
8		10,300 (39.5)	10,500 (52.5)	10,375 (60)	7,825 (65)	6,890 (69)	6,165 (72)	5,900 (73)
9		8,750 (30.5)	8,955 (47.5)	8,865 (56.5)	7,270 (62)	6,400 (66)	5,760 (69.5)	5,485 (71)
10		7,530 (17)	7,425 (42)	7,370 (52.5)	6,810 (59)	5,985 (63.5)	5,330 (67.5)	5,125 (69)
12			5,370 (27.5)	5,350 (43.5)	5,360 (52)	5,265 (58)	4,715 (62.5)	4,485 (64.5)
14				4,045 (32.5)	4,050 (44.5)	4,065 (52)	3,685 (57.5)	3,495 (60)
16	See Note 16			3,130 (15)	3,145 (36)	3,160 (45.5)	3,180 (52.5)	3,150 (55)
18					2,450 (24)	2,465 (38)	2,490 (46.5)	2,505 (50)
20						1,925 (29)	1,950 (40)	1,960 (44)
22						1,490 (14.5)	1,520 (32.5)	1,535 (37.5)
24							1,175 (22.5)	1,190 (30)
26								900 (19)
0.1A (kg)	300	280	265	255	250	245	245	240
Minimum boom angle (°) for indicated length (no load)	0							
Maximum boom length (m) at 0° boom angle (no load)	29.0							



NOTE: ( ) Boom angles are in degrees.  
 #LMI operating code. Refer to LMI manual for operating instructions.  
 \*This capacity is based on maximum boom angle.

Lifting Capacities at Zero Degree Boom Angle On Outriggers Fully Extended - 360°								
Boom Angle	Main Boom Length in Meters							
	8.8	12.2	15.2	18.3	21.3	24.4	27.4	29.0
0 deg.	11,825 (6.9)	6,940 (10.3)	4,405 (13.4)	2,965 (16.4)	2,030 (19.5)	1,395 (22.5)	940 (25.6)	755 (27.1)

NOTE: ( ) Reference radii in meters.

A6-829-102266



## Daniel Smith Industries Ltd

315 Flaxton Road, Rangiora, 7400

Canterbury, New Zealand.

Phone: 0064 (0) 3 313 9902

Fax: 0064 (0) 3 313 9904

Mobile 0064 (0) 21 33 66 23

Email: [daniel@danielsmith.co.nz](mailto:daniel@danielsmith.co.nz)

Website: [www.danielsmithindustries.co.nz](http://www.danielsmithindustries.co.nz)

# GROVE®

## RT530E-2

### 4 X 4 / 30-TON ROUGH TERRAIN CRANE

Page 4 of 10

## 7.9 m - 13.7 m TELE OFFSETTABLE BOOM EXTENSION ON OUTRIGGERS FULLY EXTENDED - 360°

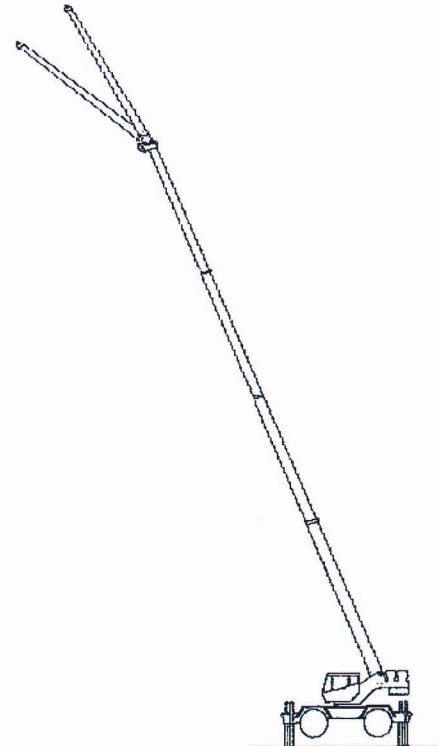
Radius in Meters	**7.9 m LENGTH		13.7 m LENGTH	
	#0021	#0023	#0041	#0043
	0° OFFSET	30° OFFSET	0° OFFSET	30° OFFSET
9	*3,265 (76)			
10	3,060 (75)		*2,380 (76)	
12	2,710 (71.5)	*2,425 (76)	2,300 (75.5)	
14	2,375 (68)	2,185 (73)	2,040 (72.5)	
16	2,105 (64.5)	1,990 (69.5)	1,860 (69.5)	*1,235 (76)
18	1,890 (61)	1,825 (65.5)	1,675 (66.5)	1,235 (75)
20	1,705 (57)	1,655 (62)	1,520 (63.5)	1,230 (71.5)
22	1,540 (53.5)	1,530 (58)	1,370 (60.5)	1,155 (68.5)
24	1,180 (49)	1,365 (53.5)	1,270 (57)	1,120 (65)
26	885 (44.5)	1,040 (48.5)	1,165 (54)	1,060 (61.5)
28	635 (39.5)	765 (43.5)	970 (50)	995 (57.5)
30		530 (37.5)	755 (46.5)	935 (53.5)
32			565 (42)	760 (49)
34				565 (43.5)
0.1A (kg)	260	245	230	210
Min. boom angle for indicated length (no load)	24°	30°	30°	30°
Max. boom length at 0° boom angle (no load)	24.4 m		24.4 m	

NOTE: ( ) Boom angles are in degrees. A6-829-100581B

#LMI operating code. Refer to LMI manual for instructions.

\*This capacity based on maximum boom angle.

\*\*7.9 m capacities are also applicable to fixed offsettable ext. However, the LMI codes will change to #0051 and #0053 for 0° and 30° offset, respectively.



### BOOM EXTENSION CAPACITY NOTES:

1. All capacities above the bold line are based on structural strength of boom extension.
  2. 7.9 m and 13.7 m boom extension lengths may be used for single line lifting service.
  3. Radii listed are for a fully extended boom with the boom extension erected. For main boom lengths less than fully extended, the rated loads are determined by boom angle. Use only the column which corresponds to the boom extension length and offset for which the machine is configured. For boom angles not shown, use the rating of the next lower boom angle.
- WARNING:** Operation of this machine with heavier loads than the capacities listed is strictly prohibited. Machine tipping with boom extension occurs rapidly and without advance warning.
4. Boom angle is the angle above or below horizontal of the longitudinal axis of the boom base section after lifting rated load.
  5. Capacities listed are with outriggers fully extended and vertical jacks set only.



**Daniel Smith Industries Ltd**  
 315 Flaxton Road, Rangiora, 7400  
 Canterbury, New Zealand.  
 Phone: 0064 (0) 3 313 9902  
 Fax: 0064 (0) 3 313 9904  
 Mobile 0064 (0) 21 33 66 23  
 Email: [daniel@danielsmith.co.nz](mailto:daniel@danielsmith.co.nz)  
 Website: [www.danielsmithindustries.co.nz](http://www.danielsmithindustries.co.nz)

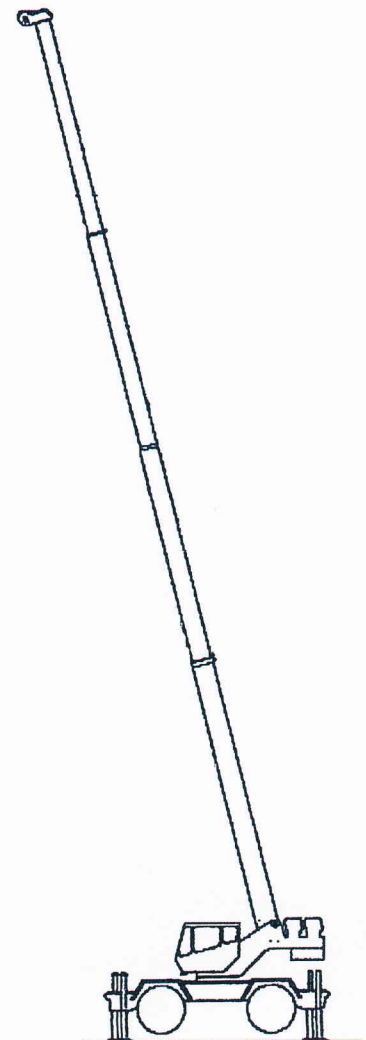
**GROVE**

**RT530E-2**

**4 X 4 / 30-TON ROUGH TERRAIN CRANE**

**RATED LIFTING CAPACITIES IN KILOGRAMS**  
**8.8 m - 29.0 m BOOM**  
**ON OUTRIGGERS 50% EXTENDED (4.3 m spread) - 360°**

Radius in Meters	#4001							
	Main Boom Length in Meters							
	8.8	12.2	15.2	18.3	21.3	24.4	27.4	29.0
3	27,000 (61)	21,750 (70)	20,400 (74.5)					
3.5	24,200 (57)	21,750 (67.5)	20,375 (72.5)					
4	22,050 (53)	20,325 (64.5)	18,750 (70.5)	*16,775 (76)				
4.5	18,550 (48.5)	17,050 (62)	15,875 (68.5)	14,875 (72.5)	*11,250 (76)			
5	15,125 (43.5)	14,600 (59)	13,700 (66)	12,925 (71)	10,600 (74)	*9,525 (76)		
6	10,725 (31.5)	10,650 (53.5)	10,625 (62)	10,100 (67.5)	9,650 (71)	8,580 (74)	*7,375 (76)	
7		8,085 (47)	8,115 (57.5)	8,175 (64)	7,855 (68)	7,475 (71.5)	6,780 (74)	*6,395 (76)
8		6,390 (39.5)	6,430 (52.5)	6,495 (60)	6,530 (65)	6,295 (69)	6,070 (72)	5,900 (73)
9	See Note 16	5,190 (30.5)	5,235 (47.5)	5,305 (56.5)	5,370 (62)	5,335 (66)	5,155 (69.5)	5,070 (71)
10		4,275 (17)	4,340 (42)	4,420 (52.5)	4,465 (59)	4,525 (63.5)	4,425 (67.5)	4,355 (69)
12			3,100 (27.5)	3,185 (43.5)	3,215 (52)	3,255 (58)	3,295 (62.5)	3,275 (64.5)
14				2,320 (32.5)	2,345 (44.5)	2,375 (52)	2,410 (57.5)	2,430 (60)
16				1,690 (15)	1,715 (36)	1,735 (45.5)	1,760 (52.5)	1,775 (55)
18					1,240 (24)	1,255 (38)	1,275 (46.5)	1,285 (50)
20						885 (29)	895 (40)	905 (44)
22						580 (14.5)	595 (32.5)	600 (37.5)
0.1A (kg)	300	280	265	255	250	245	245	240
Minimum boom angle (°) for indicated length (no load)							15	20
Maximum boom length m) at 0° boom angle (no load)							24.4	



NOTE: ( ) Boom angles are in degrees.

#LMI operating code. Refer to LMI manual for operating instructions.

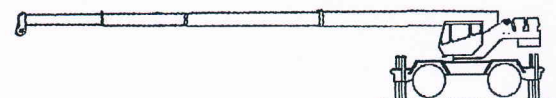
\*This capacity is based on maximum boom angle.

**Lifting Capacities at Zero Degree Boom Angle  
 On Outriggers 50% Extended - 360°**

Boom Angle	Main Boom Length in Meters					
	8.8	12.2	15.2	18.3	21.3	24.4
0°	8,235 (6.9)	4,030 (10.3)	2,450 (13.4)	1,580 (16.4)	955 (19.5)	510 (22.5)

NOTE: ( ) Reference radii in meters

A6-829-102267





**Daniel Smith Industries Ltd**  
 315 Flaxton Road, Rangiora, 7400  
 Canterbury, New Zealand.  
 Phone: 0064 (0) 3 313 9902  
 Fax: 0064 (0) 3 313 9904  
 Mobile 0064 (0) 21 33 66 23  
 Email: [daniel@danielsmith.co.nz](mailto:daniel@danielsmith.co.nz)  
 Website: [www.danielsmithindustries.co.nz](http://www.danielsmithindustries.co.nz)

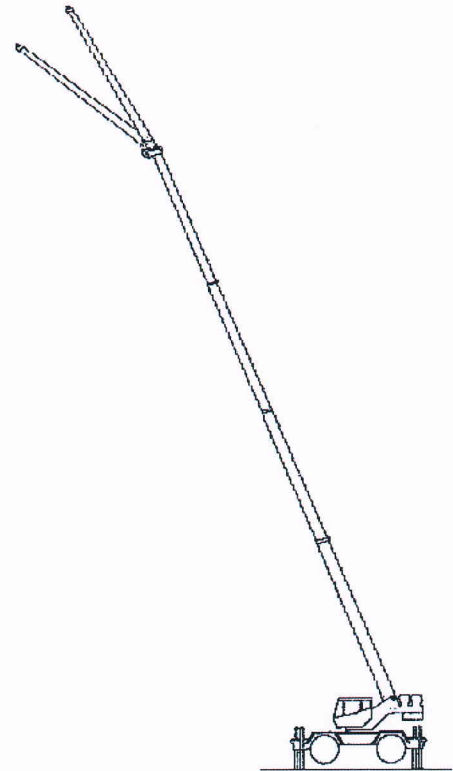
**GROVE®**

**RT530E-2**

**4 X 4 / 30-TON ROUGH TERRAIN CRANE**

**7.9 m - 13.7 m TELE BOOM EXTENSION  
 ON OUTRIGGERS 50% EXTENDED (4.3 m spread) - 360°**

Radius in Meters	**7.9 m LENGTH		13.7 m LENGTH	
	#4021	#4023	#4041	#4043
	0° OFFSET	30° OFFSET	0° OFFSET	30° OFFSET
9	*3,265 (76)			
10	3,060 (75)		*2,380 (76)	
12	2,710 (71.5)	*2,425 (76)	2,300 (75.5)	
14	2,150 (68)	2,185 (73)	2,040 (72.5)	
16	1,605 (64.5)	1,990 (69.5)	1,860 (69.5)	*1,235 (76)
18	1,180 (61)	1,515 (65.5)	1,445 (66.5)	1,235 (75)
20	840 (57)	1,115 (62)	1,110 (63.5)	1,230 (71.5)
22	555 (53.5)	790 (58)	835 (60.5)	1,155 (68.5)
24		515 (53.5)	600 (57)	965 (65)
26				720 (61.5)
28				505 (57.5)
0.1A (kg)	260	245	230	210
Min. boom angle for indicated length (no load)	44°	46°	48°	49°
Max. boom length at 0° boom angle (no load)	18.3 m		18.3 m	



**BOOM EXTENSION CAPACITY NOTES:**

1. All capacities above the bold line are based on structural strength of boom extension.
2. 7.9 m and 13.7 m boom extension lengths may be used for single line lifting service.
3. Radii listed are for a fully extended boom with the boom extension erected. For main boom lengths less than fully extended, the rated loads are determined by boom angle. Use only the column which corresponds to the boom extension length and offset for which the machine is configured. For boom angles not shown, use the rating of the next lower boom angle.

**WARNING:** Operation of this machine with heavier loads than the capacities listed is strictly prohibited. Machine tipping with boom extension occurs rapidly and without advance warning.

4. Boom angle is the angle above or below horizontal of the longitudinal axis of the boom base section after lifting rated load.
5. Capacities listed are with outriggers properly extended and vertical jacks set only.

NOTE: ( ) Boom angles are in degrees. A6-829-100583B

#LMI operating code. Refer to LMI manual for instructions.

\*This capacity based on maximum boom angle.

\*\*7.9 m capacities are also applicable to fixed offsettable ext. However, the LMI codes will change to #4051 and #4053 for 0° and 30° offset, respectively.



**Daniel Smith Industries Ltd**  
 315 Flaxton Road, Rangiora, 7400  
 Canterbury, New Zealand.  
 Phone: 0064 (0) 3 313 9902  
 Fax: 0064 (0) 3 313 9904  
 Mobile 0064 (0) 21 33 66 23  
 Email: [daniel@danielsmith.co.nz](mailto:daniel@danielsmith.co.nz)  
 Website: [www.danielsmithindustries.co.nz](http://www.danielsmithindustries.co.nz)

**GROVE®**

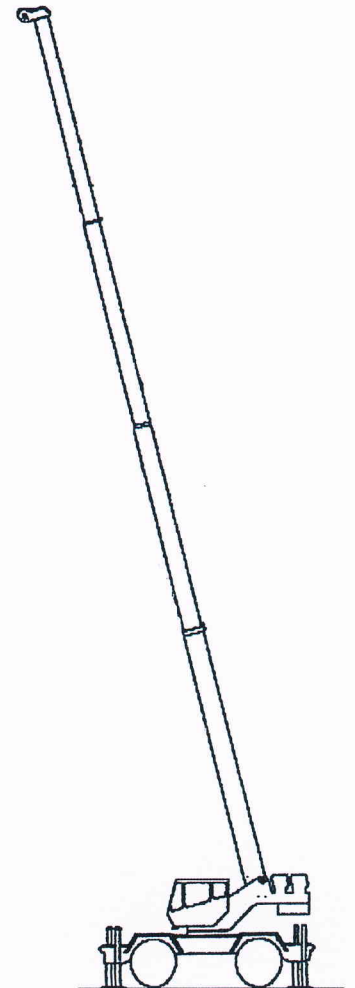
**RT530E-2**

**4 X 4 / 30-TON ROUGH TERRAIN CRANE**

**RATED LIFTING CAPACITIES IN KILOGRAMS**  
**8.8 m - 29.0 m BOOM**

**ON OUTRIGGERS 0% EXTENDED (2.4 m spread) - 360°**

Radius in Meters	#8001							
	Main Boom Length in Meters							
	8.8	12.2	15.2	18.3	21.3	24.4	27.4	29.0
3	14,375 (61)	13,125 (70)	12,100 (74.5)					
3.5	11,625 (57)	10,850 (67.5)	10,125 (72.5)					
4	9,655 (53)	9,165 (64.5)	8,620 (70.5)	*8,105 (76)				
4.5	7,990 (48.5)	7,820 (62)	7,435 (68.5)	7,035 (72.5)	*6,660 (76)			
5	6,690 (43.5)	6,605 (59)	6,490 (66)	6,165 (71)	5,860 (74)	*5,570 (76)		
6	4,900 (31.5)	4,845 (53.5)	4,855 (62)	4,835 (67.5)	4,620 (71)	4,415 (74)	*4,225 (76)	
7		3,685 (47)	3,710 (57.5)	3,760 (64)	3,710 (68)	3,560 (71.5)	3,415 (74)	*3,340 (76)
8	See Note 16	2,845 (39.5)	2,890 (52.5)	2,960 (60)	3,010 (65)	2,900 (69)	2,785 (72)	2,730 (73)
9		2,195 (30.5)	2,250 (47.5)	2,325 (56.5)	2,385 (62)	2,375 (66)	2,285 (69.5)	2,240 (71)
10		1,685 (17)	1,755 (42)	1,835 (52.5)	1,885 (59)	1,930 (63.5)	1,875 (67.5)	1,835 (69)
12			1,040 (27.5)	1,130 (43.5)	1,160 (52)	1,200 (58)	1,220 (62.5)	1,205 (64.5)
14				645 (32.5)	665 (44.5)	690 (52)	725 (57.5)	730 (60)
0.1A (kg)	300	280	265	255	250	245	245	240
Minimum boom angle (°) for indicated length (no load)				32	43	51	53	55
Maximum boom length (m) at 0° boom angle (no load)				15.2				

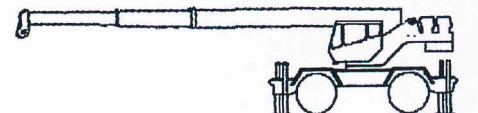


NOTE: ( ) Boom angles are in degrees.

#LMI operating code. Refer to LMI manual for operating instructions.

\*This capacity is based on maximum boom angle.

Lifting Capacities at Zero Degree Boom Angle On Outriggers 0% Extended - 360°							
Boom Angle	Main Boom Length in Meters						
	8.8	12.2	15.2				
0 deg.	3,760 (6.9)	1,540 (10.3)	670 (13.4)				



NOTE: ( ) Reference radii in meters

A6-829-102268



**Daniel Smith Industries Ltd**

315 Flaxton Road, Rangiora, 7400

Canterbury, New Zealand.

Phone: 0064 (0) 3 313 9902

Fax: 0064 (0) 3 313 9904

Mobile 0064 (0) 21 33 66 23

Email: [daniel@danielsmith.co.nz](mailto:daniel@danielsmith.co.nz)

Website: [www.danielsmithindustries.co.nz](http://www.danielsmithindustries.co.nz)

**GROVE**

**RT530E-2**

**4 X 4 / 30-TON ROUGH TERRAIN CRANE**

## ON RUBBER CAPACITIES

### STATIONARY CAPACITIES - 360°

Radius in Meters	#9005			
	Main Boom Length in Meters			
	8.8	12.2	15.2	18.3
3	11,550 (61)	10,575 (70)	*7,460 (76)	
3.5	9,445 (57)	8,825 (67.5)	7,460 (72.5)	
4	7,875 (53)	7,450 (64.5)	7,010 (70.5)	
4.5	6,470 (48.5)	6,370 (62)	6,065 (68.5)	5,705 (72.5)
5	5,335 (43.5)	5,350 (59)	5,270 (66)	5,000 (71)
6	3,660 (31.5)	3,675 (53.5)	3,685 (62)	3,695 (67.5)
7		2,650 (47)	2,660 (57.5)	2,665 (64)
8		1,980 (39.5)	1,990 (52.5)	2,000 (60)
9		1,495 (30.5)	1,505 (47.5)	1,515 (56.5)
10		1,125 (17)	1,135 (42)	1,145 (52.5)
12			610 (27.5)	615 (43.5)
0.1A (kg)	300	280	265	255
Minimum boom angle (°) for indicated length (no load)				32
Maximum boom length (m) at 0° boom angle (no load)				15.2

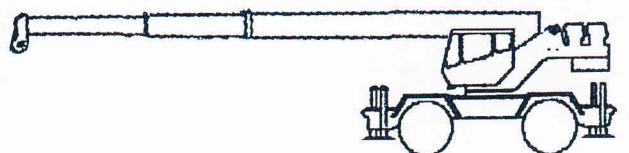
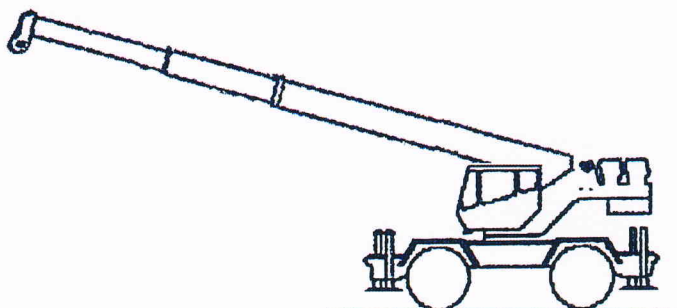
NOTE: ( ) Boom angles are in degrees.

#LMI operating code. Refer to LMI manual for operating instructions.

\*This capacity is based on maximum boom angle.

Lifting Capacities at 0° Boom Angle On Rubber Stationary - 360°				
Boom Angle	Main Boom Length in Meters			
	8.8	12.2	15.2	
0 deg.	2,545 (6.9)	1,025 (10.3)	350 (13.4)	

NOTE: ( ) Reference radii in meters.







**Daniel Smith Industries Ltd**  
 315 Flaxton Road, Rangiora, 7400  
 Canterbury, New Zealand.  
 Phone: 0064 (0) 3 313 9902  
 Fax: 0064 (0) 3 313 9904  
 Mobile 0064 (0) 21 33 66 23  
 Email: [daniel@danielsmith.co.nz](mailto:daniel@danielsmith.co.nz)  
 Website: [www.danielsmithindustries.co.nz](http://www.danielsmithindustries.co.nz)

**GROVE®**

**RT530E-2**

**4 X 4 / 30-TON ROUGH TERRAIN CRANE**

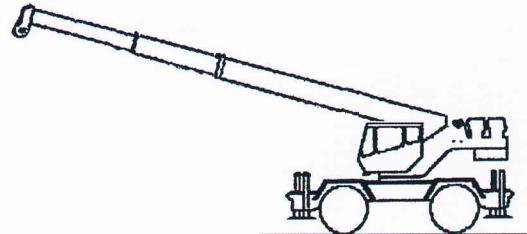
**ON RUBBER CAPACITIES (cont'd.)**  
**PICK & CARRY CAPACITIES (UP TO 4.0 km/h)**  
**BOOM CENTERED OVER FRONT (See note 7)**

Radius in Meters	#9006			
	Main Boom Length in Meters			
	8.8	12.2	15.2	18.3
3	11,725 (61)	11,725 (70)	8,275 (74.5)	
3.5	10,500 (57)	10,500 (67.5)	8,275 (72.5)	
4	9,385 (53)	9,385 (64.5)	8,275 (70.5)	
4.5	8,415 (48.5)	8,415 (62)	8,275 (68.5)	6,050 (72.5)
5	7,565 (43.5)	7,565 (59)	7,565 (66)	6,050 (71)
6	6,190 (31.5)	6,190 (53.5)	6,190 (62)	6,050 (67.5)
7		4,945 (47)	4,955 (57.5)	4,965 (64)
8		3,920 (39.5)	3,930 (52.5)	3,935 (60)
9		3,170 (30.5)	3,180 (47.5)	3,185 (56.5)
10		2,600 (17)	2,610 (42)	2,615 (52.5)
12			1,795 (27.5)	1,800 (43.5)
14				1,250 (32.5)
16				885 (15)
0.1A (kg)	300	280	265	255
Minimum boom angle (°) for indicated length (no load)				0
Maximum boom length (m) at 0° boom angle (no load)				18.3

NOTE: ( ) Boom angles are in degrees.  
 #LMI operating code. Refer to LMI manual for operating instructions.

Lifting Capacities at 0° Boom Angle On Rubber - Pick & Carry				
Boom Angle	Main Boom Length in Meters			
	8.8	12.2	15.2	18.3
0 deg.	4,965 (6.9)	2,445 (10.3)	1,400 (13.4)	785 (16.4)

NOTE: ( ) Reference radii in meters



**NOTES TO ALL RUBBER CAPACITY CHARTS:**

1. Capacities are in kilograms. The crane's stability was determined in compliance with ISO 4305-1991 and EN13000-2004 and also complies with DIN 15019.2 and British Standard 1757:1986 Clause 9. Capacities also meet the requirements of 75% stability of tipping loads when stationary and 66 2/3% stability for pick & carry lifts on rubber.
2. Capacities are applicable to machines equipped with 20.5x25 (24 ply) tires at 5.2 bar cold inflation pressure, and 16.00x25 (28 ply) tires at 6.9 bar cold inflation pressure.
3. Capacities appearing above the bold line are based on structural strength and tipping should not be relied upon as a capacity limitation.
4. Capacities are applicable only with machine on firm level surface.
5. On rubber lifting with boom extensions not permitted.
6. For pick and carry operation, boom must be centered over front of machine, mechanical swing lock engaged and load restrained from swinging. When handling loads in the structural range with capacities close to maximum ratings, travel should be reduced to creep speeds.
7. Axle lockouts must be functioning when lifting on rubber.
8. All lifting depends on proper tire inflation, capacity and condition. Capacities must be reduced for lower tire inflation pressures. See lifting capacity chart for tire used. Damaged tires are hazardous to safe operation of crane.
9. Creep - not over 61 m of movement in any 30 minute period and not exceeding 1.6 km/h.





**Daniel Smith Industries Ltd**  
 315 Flaxton Road, Rangiora, 7400  
 Canterbury, New Zealand.  
 Phone: 0064 (0) 3 313 9902  
 Fax: 0064 (0) 3 313 9904  
 Mobile 0064 (0) 21 33 66 23  
 Email: [daniel@danielsmith.co.nz](mailto:daniel@danielsmith.co.nz)  
 Website: [www.danielsmithindustries.co.nz](http://www.danielsmithindustries.co.nz)

**GROVE**

**RT530E-2**

**4 X 4 / 30-TON ROUGH TERRAIN CRANE**

**WEIGHT REDUCTIONS FOR LOAD HANDLING DEVICES**

AUXILIARY BOOM NOSE	64 kg
<b>HOOKBLOCKS and HEADACHE BALLS:</b>	
30 t, 4 Sheave	328 kg+
13.6 t, 2 Sheave	193 kg+
6.8 t Overhaul Ball (top swivel)	161 kg+
6.8 t Headache Ball	153 kg+

+Refer to rating plate for actual weight.

When lifting over boom extension, deduct total weight of all load handling devices reeved over main boom nose directly from boom extension capacity.

<b>7.9 m BOOM EXTENSION</b>	
*Erected -	1,343 kg
<b>7.9 m - 13.7 m TELE. BOOM EXTENSION</b>	
*Erected (Retracted) -	1,914 kg
*Erected (Extended) -	2,622 kg

\*Reduction of main boom capacities

**HOIST PERFORMANCE**

Wire Rope Layer	Hoist Line Pulls	Drum Rope Capacity (m)	
	Available kg*	Layer	Total
1	5,280	23	23
2	4,754	26	49
3	4,323	29	78
4	3,960	31	109
5	3,656	34	143
6	3,397	36	179

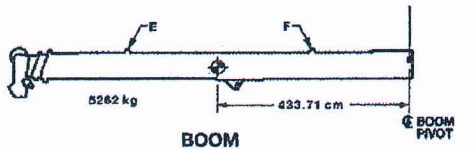
\*Max. lifting capacity: 6x37 class = 5,280 kg  
 35x7 class = 5,280 kg

**LINE PULLS AND REEVING INFORMATION**

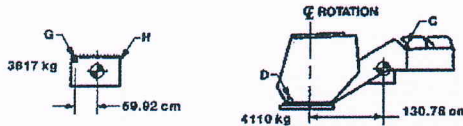
HOISTS	CABLE SPECS.	PERMISSIBLE LINE PULLS	NOMINAL CABLE LENGTH
Main & Aux.	16 mm (5/8") 35x7 Class Rotation Resistant (Non-rotating) Min. Breaking Str. 27,760 kg	5,280 kg	137 m

The approximate weight of 16 mm wire rope is 0.45kg/.3048 m

**TRANSPORTATION AND LIFTING DATA RT530E-2 SERIES**

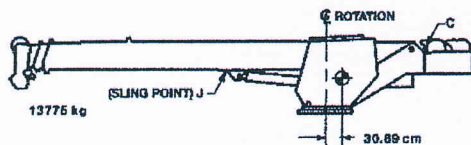


BOOM

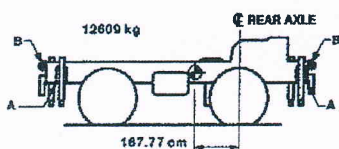


COUNTERWEIGHT (CWT)

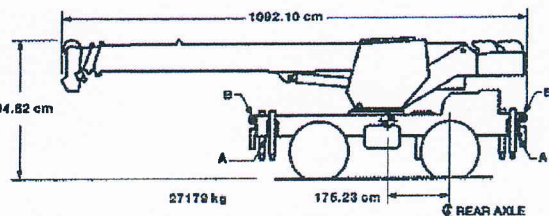
TURNTABLE (T/T)



SUPERSTRUCTURE (S/S)



CARRIER



TOTAL UNIT (WITH BOOM EXT)

FITTINGS	INCL. UNIT	TOTAL UNIT		CARRIER		S/S	T/T	BOOM	CWT	FITTING CAPACITY (TONS)			
		LIFT	TOW	LIFT	TOW					LIFT	TOW	FORE AFT	SIDE DOWN
A	4	X		X						12	SEE NOTE #5		
B	4	X	X	X	X					82	25	35	7.1
C	2					X	X			7.9			
D	2						X			2.3			
E	2							X		3.2			
F	2							X		3.2			
G	2								X	2.2			
H	2								X	8.4			
J	1					X				13			

- LIFTING OF ENTIRE CRANE OR MAJOR CRANE ASSEMBLIES MUST BE ACCOMPLISHED BY UTILIZING SPECIFIC FITTINGS INDICATED ON ABOVE CHART. USE OF FITTINGS FOR PURPOSES OTHER THAN THOSE DESIGNATED ON CHART IS PROHIBITED. FITTING CAPACITIES ARE MAXIMUM ALLOWABLE LOADS PER INDIVIDUAL FITTING.
- RIGGING PERSONNEL SHALL BE RESPONSIBLE FOR PROPER SELECTION AND PLACEMENT OF ALL SLINGS AND LOAD HANDLING DEVICES.
- DIMENSIONS AND WEIGHTS SHOWN ARE FOR LARGEST CONFIGURATION AVAILABLE. WEIGHTS DO NOT INCLUDE BOOM EXTENSION AND / OR JIB, EXCEPT WHERE NOTED.
- RIGGING PERSONNEL SHALL VERIFY DIMENSIONS AS REQUIRED FOR CLEARANCE.
- EXTEND OUTRIGGER BEAMS 46 CM (18 IN) AND SLING AROUND BEAMS.
- DO NOT USE PIVOT HOOKS OR CWT LUGS FOR LIFTING OR TIE DOWN OF ENTIRE CRANE.