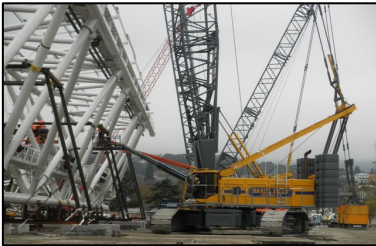


DANIEL SMITH INDUSTRIES LTD

Job Profile

Crane and Lifting Services
NEW Otago Stadium, Dunedin, NZ



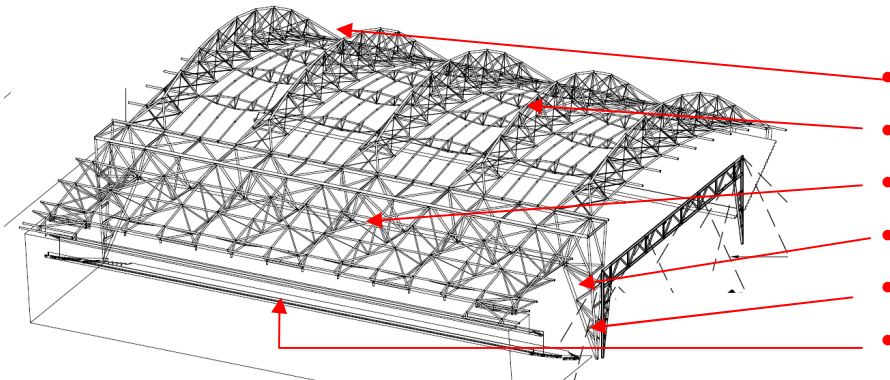
Client: Otago Stadium Trust and Arrow International
Main Contractor: Hawkins Construction Ltd
Subcontract Value: NZD \$7.2M (crane / lifting)
Client Rep / Contact: Andrew Holmes (Hawkins) a.holmes@hawkins.co.nz
DSI Project Manager: Daniel Smith (daniel@danielsmith.co.nz)
Site Craneage Manager: Mike Hannan (michaelh@danielsmith.co.nz)
Contract Period: June 2009 to January 2011

General description of work:

Daniel Smith Industries were employed as craneage heavy lifting contractors by Hawkins Construction for 'sole' supply of lifting services to construct the new 'covered' Otago Stadium.

Stadium was on fast track build program for the 2011 Rugby World Cup. DSI provided piling foundations works under separate contract and crane lifting services sub contract of which involved the supply of cranes for lifting of 2,278 no. precast concrete units (8 to 40 ton each) and 3,700 ton of prefabricated steel including main structural steel components along with all general lifting of formwork propping building cladding and seats and stairs.

The critical main lifts consisted of:



- End arch trusses 2 x 222 ton
- Mid arch trusses 3 x 165 ton
- Primary Truss 371 ton
- Truss eaves 2 x 118 ton
- Truss legs 2 x 55 ton
- Roof segments 5 x 77 ton

On project Otago Stadium, DSI had up to 22 personnel on site and completed 26,300 hours of crane works utilising cranes:

- Liebherr LR1400 400 ton crawler
- Liebherr LR1280 280 ton crawler
- Hitachi SCX2800 275 ton crawler
- Hitachi CX1800 180 ton crawler
- Manitowoc M12000 110 ton crawler
- Manitowoc M8500 85 ton crawler
- Grove RT760 60 ton rough terrain crane
- Merlo 6 ton material handler
- JLG 42 metre access boom

DSI subcontract was completed without health, safety or environmental incidents and non-compliance with DSI engineered lift plans. All work is completed on time and at the tendered price.

Winner of 2011 NZ Crane Association:



**'Project of the Year Award'
& 'People's Choice Award'**



371 ton Primary Truss Lift